

The South Eastern Times

Thursday, 7 April, 2022

Phone: 08 8741 8170 Trades and Classifieds: 1300 666 808

\$2.00 Inc. GST



Don't blame the butler

PAGE 3



Funding support for arts

PAGE 5



In the swim

PAGE 10



Four-page TV Guide

INSIDE



Circuit breaker: Millicent North Primary School went into a four day closure on Tuesday to slow the spread of Covid 19.

Covid hits school

By Caroline Hammat

The families of Millicent North Primary School students received a letter on Monday to inform them of a school closure due to Covid 19 cases escalating at the school.

Imposed by the Department for Education, the closure is a four day circuit breaker which began Tuesday due to the increase in positive cases both in students and staff.

Acting Principal, Carolyn Rayson, told the South Eastern Times that there had been low numbers of ongoing outbreaks for a few

weeks with numbers starting to increase last week.

"All department schools have to report every day on their cases and they made a decision this morning, as our staff numbers were beginning to grow as were our student numbers, they were going to introduce a circuit breaker for four days," Ms Rayson said.

As of Monday, four teachers and six student support officers had tested positive to the virus and about 60 children with others still waiting on test results.

Most of those testing positive are experi-

encing mild cold like symptoms only.

"It largely comes down to managing staff safety and having enough staff to manage the classes," said Ms Rayson.

"We are seeing children that are testing positive but they aren't experiencing any symptoms which makes it hard.

"I'm hopeful with the circuit breaker and two weeks of school holidays coming up that it will see us coming out the other side soon and those that have had Covid will have a certain amount of immunity that will see us through the winter."

The school remains open for children of essential workers, but the majority of students will be continuing with remote learning from home.

It is mandatory for teachers to wear masks in class but is only a recommendation for students.

"The masks are available in class and we are seeing more and more students choosing to wear them," Ms Rayson said.

"Hopefully Monday we will be back to normal."

NEW SEASON'S RUNNING BARE RANGE IN STORE!



YOUR LOCAL EXPERTS | 36 GEORGE STREET, MILLICENT
PHONE 08 8733 2433

DENTON'S
SPORTSPOWER

12543853-01 14-22

The editor's desk

Covid-19 has impacted many local businesses in our communities so it's important that we show our support in the recovery phase.

Tiring as it is, we here in the South East know that we are lucky not to have endured Covid as our fellow city dwellers have.

Disruption to work places and schools has become so common place it is almost an accepted part of life.

This does not take away the emotional and economic stress these disruptions create for affected individuals and businesses.

It is the time to show patience and understanding for businesses juggling worker shortages and supply issues created by Covid.

While we all make our way through this situation, let's support our pubs, clubs and tourism experiences.

With the borders open we could encourage friends and relatives to visit the region to enjoy brunches, lunches and all we have to offer, which is plenty.

If we do our bit to support our local community we'll be able to look back and know that we got through this together.



- Peter Gandolfi,
Managing Editor

INSIDE

WEATHER	page 14
TV GUIDE.....	pages 15-18
PUZZLES	page 19
PROPERTY	pages 20-21
CLASSIFIEDS	page 22
SPORT.....	pages 23-32

Wattle Range grant boost

Wattle Range Council recently approved recommendations for 13 of 22 grant applications received for council's Financial Assistance and Sport and Recreation Grants programs.

Annually council allocates \$55,000 toward the grants programs through two separate funding rounds.

Due to substantial funds still available within the program an extra round of funding was offered in the 2021/22 financial year.

A total of 22 applications were submitted with five Community Financial Assistance Grants and eight Community Sport and Recreation Grants endorsed.

The grants totalled \$20,476 for various Wattle Range Council community and sporting groups.

NEWS

Tree tackles blues

Millicent will soon be home to the first Blue Tree to be painted in the Wattle Range Council area to bring attention to mental health issues.

As an initiative of the Wattle Range Suicide Prevention Network (WRSPN), the Millicent tree will join more than 750 around Australia which have been painted under the national Blue Tree Project aimed at encouraging conversations about mental health.

The Millicent tree to be painted blue is the trunk of a large gum tree which is near the old tennis courts at the Williams Road end of the Domain Parklands.

Originally from the grounds of the Millicent Swimming Lake, where the tree had reached the end of its life, the trunk was lain on its side in the parklands about four years ago to create a climbing feature for children.

Council also added a seat nearby. Permission for WRSPN to paint the tree blue was given at council's meeting last month where Mayor Des Noll and chief executive Ben Gower excluded themselves from the discussions, due to their membership of the WRSPN, to allow the Council to consider a letter from network Secretary Marg Chapple about the proposal.

"This [the tree] is in a good location where it will be seen; there already is a seat nearby where people could just sit and contemplate," Mrs Chapple wrote.

"We would like to put a plaque either on the tree stump or nearby explaining the meaning of The Blue Tree.

"For some time, the Wattle Range Suicide



To be painted blue: This tree trunk, in Millicent's domain parklands near the old tennis courts, will soon be painted blue to highlight mental health issues. Pictured with the tree are Wattle Range Mayor and Chair of the Wattle Range Suicide Prevention Network, Des Noll with Network Secretary Marg Chapple.

Prevention Network has wanted to paint a significant tree blue to help spark conversations and encourage people to speak up when

battling mental health concerns; the Blue Tree Project's key message is that 'it's OK to not be OK'.

"Other Networks in the Limestone Coast have painted blue trees in their districts, and we would like to have at least one in the Wattle Range Council area."

After the meeting, Mr Noll, who is the chair of network, said the national Blue Tree Project originated from a young man in Western Australia who sadly took his own life.

"His friends established the blue tree initiative that represents hope, love, strength, and friendship, and is now recognised nationally," Mr Noll said.

"Working with council, members [of the network] will paint the tree blue [with non-toxic paint], and it will act as a talking point for suicide prevention.

"It further represents awareness, prevention and early intervention being extremely important to reduce the stigma and promote positive mental health.

"The blue tree initiative will continue to encourage individuals and communities to have the conversation around mental health and suicide prevention and become more educated around this silent killer."

Another prominent Blue Tree in the Limestone Coast is that which travellers between Millicent and Kingston will see from the Princes Highway.

On Conmurra Station, the tree was painted by Member for MacKillop, Nick McBride and several of his station employees.

New settlers gather in Penola for lunch

Glorious sunshine greeted 17 people in the Penola Park on Saturday for the fourth get together of the new Penola Settlers group.

The recently formed group is designed to bring people new to Penola together for a chat and shared lunch and enjoy a relaxed atmo-

sphere. It has been decided that the group will meet quarterly.

The next get together will be in June with a date and venue yet to be decided.

Everyone from a 100km radius of Penola,

or wanting to meet new people, are most welcome. The core group is growing and friendships are forming.

To join it is just a matter of turning up on the day with food and drink to share and a willingness to join in.

Calendar of Events

Supplied by Wattle Range Council

April

■ Jam Factory exhibition at the Millicent Gallery

2-9 April

■ Come and Try Golf with Professional Craig Davis at Penola Golf Club

8-14 April

■ Noorla Yo-Long Youth Camp, Rendelsham

8-9 April

■ Coonawarra After Dark Weekend

8 April

■ Vintage Stomp at Coonawarra After Dark

■ Vintage celebrations at Coonawarra After Dark

9 April

■ Kalangadoo Farmers Market

■ Chris Greek Charcoal and Grill at Coonawarra After Dark

10 April

■ Millicent Choral Society Variety Concert

■ Wagners Rose Garden Open

■ Kalangadoo Guided History Walk

■ Come and Try (meet and greet) Hunt

15 & 17 April

■ Pizza and tunes at Raidis Estate cellar door

16 April

■ Beachport Easter Market Day and Duck Race

■ Kalangadoo Farmers Market

■ Digiorgio Family Wines Penola Club

19- 29 April

■ Full Throttle in Wattle school holiday activities

■ Rivoli Bay Jetties Junior Fishing Competition

23 April

■ Living the Dream at Raidis

■ Millicent Community Market

■ Kalangadoo Farmers Market

■ 25 year Reunion at Nangwarry Football Club

24 April

■ Music 4 A Mate - Alby Pool

24-25 April

■ Anzac Stockman's Challenge

25 April

■ Anzac Day Dawn Service and commemorations

29 April

■ Coonawarra Community Club Tea Night

30 April

■ Women on Horseback - an exhibition at the Millicent Museum

■ Kalangadoo Farmers Market

Big on products. Big on service.

And big on local banking

We deliver the products and technology you'd expect from a big bank, plus the personal service you wouldn't.

As one of Australia's biggest banks, our heartland remains firmly local. As does our focus on you and the quality banking products you need.

Feel good about who you bank with. Try Bendigo.

Find out more. Call us on 8737 2400 or search Bendigo Bank Penola & District.

BANK LOCAL

Bendigo Bank

Community Bank Penola & District

Bendigo and Adelaide Bank Limited ABN 11 068 049 178, AFSL/Australian Credit Licence 237879 A1455027 OUT_15074533, 01/04/2022

12543303-A14-22

It wasn't the butler

Following a two year hiatus due to Covid, the Millicent Museum's popular mystery night proved to be as popular as ever with 150 people attending the sold out event.

The fictional plot began on the walk to the Shipwreck Room, where shady characters tried to distract and woo the guests.

Throughout the evening ticket holders continued to be introduced to more than 30 cast members playing a variety of roles in the 'whodunnit' story.

The interactive theatre show revolved around the discovery of the deceased, Lord Formley, found attached to the Geltwood's ship anchor when lifted from the ocean.

Potential guilty suspects were Lord Formley's distraught wife Lady Formley and daughter Virginia, Captain Sparks and his shipmate, Hornley Plum or the three pirates captured during the ship's journey.

There were disgruntled tenants of Lord Formley who were happy to see his demise, and the local tavern offered several potential suspects to the crime.

The murderer has been revealed as the victim's daughter, Virginia Formley, who resented how her father treated her.

Lord Formley never showed his daughter affection, constantly put her down and had arranged to marry his young daughter off to an elderly, wealthy Lord.

On the night of his disappearance, Lord Formley was not pleased to find his daughter in a passionate embrace with shipmate, and occasional blacksmith, Hornley Plum whom she secretly loved.

Ms Formley knew if this secret affair became known to her father she would lose her inheritance and be banished.

It was not surprising that Lord Formley reacted poorly, punching and knocking out Mr Plum, he then attacked his daughter who managed to grab a knife from his belt and lash out with it.

The knife connected with Lord Formley's throat, he staggered back and fell overboard.

Ms Formley dragged the unconscious Mr Plum out of sight and tried to locate her father, with no success, proceeding to go below deck for the night and see what the morning would bring.



Museum mystery solved: Lindsay Hart acted as a supporting role to Sue Correll and Casey Leigh who played Lady and Virginia Formley.

Attendees to the event went in the draw to guess the guilty party, with a dinner for two at Mayura Station Tasting Room for the first correct entry drawn, won by Mandy Madzia.

Ticket holders chose Chris Hollingsworth as Maud Robson for Best Actor accolades and

the Best Costume worn by Julie Walker as Madame Maggie.

Performance organiser, Ms Hollingsworth, said about the evening: "For an unrehearsed performance the cast and crew could not have been more professional."

Resident meetings planned

Mount Burr and Tantanoola residents will have an opportunity to be part of planning the future of their towns, and the development of new town entrance signage, at meetings this week and next.

Conducted by Wattle Range Council, the meetings are being held in Mount Burr tomorrow, and at Tantanoola next Wednesday.

"This is a great opportunity to have your say about your community and its future direction," said Wattle Range Council Director Development Services, Emma Clay.

"This information will help guide council's planning and budget allocation process.

"The Community Town Plans will have a life of 10 years and will be a unique vision for each, individual town.

"The plans will identify projects and priorities that both council and the wider community can work towards in the long term.

"Previous Community Town Plans had identified town entry signage as a priority in both Mount Burr and Tantanoola.

"Council is progressing these projects and seeks community input to ensure the signs reflect the community's visions."

The Mount Burr meeting will be held at the football clubrooms from 5.30pm tomorrow.

Tantanoola's meeting will be held next Wednesday at the Football Netball Club from 5.30pm.

To assist with catering those intending to attend should RSVP to Council's Community Development Officer, Sarah Marzec at sjm@wattlerange.sa.gov.au or on 8733 0900.

Happi Belli Vietnamese street food takeaway opening

By Caroline Hammat

In a first for Millicent, locals have the opportunity to experience genuine Vietnamese street food in a new takeaway business opening today.

Thi My Chieu Pham, who prefers to be called Chiu, will be offering the new cuisine in her George Street store.

The store, Happi Belli, will be offering Vietnamese pork or chicken rolls (Banh mi), spring rolls, wontons and a noodle dish with vegetables on the menu.

In the future there are plans to add a new dish each Friday as a weekly special.

Although Chiu has worked in a central Vietnam market specialising in street food she has only been selling her food for a short time at the Millicent markets.

The many positive comments received for her cooking has encouraged Chiu to do more, telling the South Eastern Times: "I enjoy cooking and when I cook I am very happy."

"I like to cook for other people so they can enjoy the food as well; I believe that when you are happy, you cook good food."

Growing up in Vietnam, Chiu was about 10 years old when she began cooking simple Vietnamese dishes for family members, including

deep fried egg, deep fried fish and fried rice.

Later Chiu would purchase street food and then try to cook something similar at home.

When she began living independently, street food became a staple in her every day life.

Chiu's mother, father and brother still live in the family home in the Mekong Delta and certain dishes bring back special memories.

"Duck cooked with ginger always reminds me of my father; whenever I return home he cooks this dish for me.

"Another special dish in my life is Vietnamese meatloaf."

Chiu has chosen the name Happi Belli for her new venture for a very simple reason: "I chose the name because I feel that when you eat good food which you enjoy, you have a happy belly."

There has been plenty of support from Chiu's family with her sister-in-law, Natania Hollingsworth, working with Chiu to create a store logo and the opening day of April 7 chosen on advice from Chiu's father who told his daughter it is a lucky day for her.

The shop will be open Monday to Thursday 10am until 4pm and Friday's 10am until 8pm and closed on weekends as Chiu plans to continue cooking at markets.



Cooking for happy bellies: Deep frying freshly made spring rolls for market goes at the March market is Chiu who will open Millicent's first Vietnamese street food takeaway shop today.

With friendly and helpful service right to your car, Foster Foodland is the place to shop.

Fosters FOODLAND Kentish Place, Millicent | Phone 8733 2106

Great food lives here.



12486883-1/4/5-20

Popping up to help out

Another hugely successful Fashion Pop-Up shop event has been held in Penola to raise funds for the Stand Like Stone Foundation.

Event organisers, Amanda Flint and Janet Brodie are members of the Penola Coonawarra Sub-Fund of Stand Like Stone. They, along with a wonderful team of volunteers, have now organised three fund raising clothing sales.

"The money raised stays in our town, to be granted for projects and educational scholarships that directly benefit our community," Mrs Brodie said.

Mrs Flint and Mrs Brodie thanked the Coonawarra Penola RSL for their support and the use of the beautiful space of the RSL Hall.

"In our small town, it is fantastic to have organisations working together to benefit the community," she said.

They are also extremely grateful to the clothing sellers who trusted them to provide an event to sell their clothing for them.

Mrs Flint said: "The sellers donate 25 per cent of the sales from their clothing to Stand Like Stone, and this time the event raised a whopping \$2755."

While the pop-up involves a lot of work to organise Mrs Brodie said it was so satisfying to see the hall full of women – and some men – recently.

"People go home with beautiful clothing at bargain prices and at the same time, we are contributing to a sustainable economy and looking after our community".

Mrs Flint and Mrs Brodie look forward to seeing shoppers at the next Pop-Up which will be held in June.



Organisers of the Pop Up Shop, from left, Janet Brodie and Amanda Flint.

Picture: SUPPLIED



Australian Government

medicare

**NOW'S THE TIME TO CHECK UP ON YOUR HEALTH
IN PERSON, BY PHONE OR VIDEO CALL.**

**CARE FOR
YOUR
HEALTH**

Australia has a world-class healthcare system that's easy to access, even when you can't be there in person. Telehealth enables you to catch-up with your GP or health professional, and the Australian Government has now made it permanently available through Medicare. Show your health some love either face-to-face, by phone or video call. Find out more at australia.gov.au

Authorised by the Australian Government, Canberra

Book invite

Former Penola resident, Tracey Browning, daughter of Janeen Wylie of Penola, was one of 16 rural business women in Australia chosen to write a chapter to be included in a book about rural business women.

Focused on growing business in rural Australia, the book project took twelve months from inception and it was published late last year. Tracey's chapter is focused on recognising opportunities.

"It was a big learning curve as I am not a professional writer," Mrs Browning said.

"Thankfully the driving force of the project was Sarah Walkerden, The Rural Copywriter, who curated and guided us all in achieving our chapters and co-ordinated the finished project with editors and the publisher."

Tracey has been a passionate quilter and small business owner in rural South Australia since 1998.

"Opportunities kept presenting themselves and the business grew in different directions every couple of years as I found my path," she said.

From teaching patchwork to locals, to quilting for others, to creating online retail space, designing and manufacturing, then publishing. So many skills were learned and used to build her business.

Her online retail space, constanlinequilts.com is the largest online supplier of machine quilting products in Australia after 21 years online.

Selling commercial machines and computer systems took her in the direction of mentoring and supporting quilters across Australia and New Zealand, in creating and succeeding in their own home based businesses which are ideal for rural and regional locations.

"Creating and running an International festival for ten years, to provide this niche industry with focussed classes with national and international teachers, exhibitors and inspiration, was my next step.

"And now finally I am creating an online global space to share my years of expertise in both machine quilting, the business of machine quilting and also my own experiences in publishing, teaching, manufacturing, marketing online and travelling," Mrs Browning said.

Tracey's career is still evolving and her aim is to stay passionate while also allowing her the freedom to balance family life, especially with her first grandchild and another on the way.



Tracey Browning.

Funding support for art

By Caroline Hammat

Building and land owners in the Wattle Range Council area wanting to undertake a public art project on their property will soon have the opportunity to apply to council for support in achieving their aim.

Amendments to the Community Grants, Scholarship and Sponsorship Programs Guidelines will offer building and land owners, with property that adjoins or faces highly frequented public areas, an opportunity to apply for up to \$5,000 to support public art outcomes in Wattle Range Council towns.

Applicants will need to use an artist of renown in their applications with Director of council's Development Services, Emma Clay confirming: "This could include university students with a large folio of work and local or part-time artists with a history of producing and delivering quality outcomes."

Ms Clay said private residences in high profile areas are eligible to apply for the Public Art on Private Assets Program, and may be considered, but preference is for commercial business premises.

Applications will be assessed by an internal cultural assessment team led by Manager Libraries and Cultural Services, Janice Nitschke, and will need to encompass council's Wind and Water theme.

Additional advice and feedback on applications could be sought from local arts groups.

Ms Nitschke told the South Eastern Times: "It's a real opportunity for Millicent businesses to work with artists and emerging artists in our community through mentorships."

"Community and public art is proven to have positive economic and community benefits."

Applicants are required to contribute 50 per cent of the project costs and ongoing maintenance of the art installation is the responsibility of the applicant.

A recent review undertaken of Wattle Range Council's program guidelines by council's Development Services has The Public Art on Private Assets Program replace the existing Arts and Cultural Grant with extra funding now available and clearer guidelines in place for applicants.



Public Art Boost: Wattle Range Council's Emma Clay and Janice Nitschke admire one of Millicent's murals. Similar projects will now be eligible to apply for council support as part of the Public Art on Private Assets Program.

Tourists enjoy Beachport Autumn in high numbers

By Elsie Adamo

Beachport is enjoying a long summer of tourism according to accommodation vendors.

The town traditionally experiences a big drop off in tourists once the summer school holidays have ended, but it has remained busier than usual.

Stacey and Paul Benson have owned and operated the Beachport Caravan Park for five years, and last September they bought the Beachport Motor Inn.

"Traditionally we used to get to the end of January and things would quieten off, but February and the first half of March was just as busy," Ms Benson said.

"We are seeing a lot of families now travelling outside of school holidays, particularly Victorians and people from New South Wales.

"It is great for the town and for the area, particularly after the last couple of years."



Busy: Beachport Caravan Park owners Paul and Stacey Benson said the park has been enjoying a busy February and March.

As to why there has been an extended holiday period, Ms Benson said she thought it may be the increase in remote learning and working.

"Their kids have learnt outside of the classroom for the last two years, so why put

our life on hold and travel during the traditional school holidays, when we can go when things are a bit quieter and not deal with the crowds," she said.

"It got to the point on some weekends that we were turning people away because we were booked out.

"The Motor Inn has been consistently booked out mid-week; a lot of workers have been coming through recently."

Not only are more people around, but Ms Benson said they are staying for longer.

"We are finding that people are not just checking in for one or two nights, they are checking in for three or four or five nights," she said.

Ms Benson said the town has benefited from slightly warmer weather after summer which has helped encourage people to stick around.

"Mother nature has been very kind to us

too," she said.

"Normally she does not play fair; Beachport is renowned for its wind."

Ms Benson is starting to see it quieten a little before it gets busy again at Easter.

"It has started to drop off now," she said.

"We were fully booked out for the Crayfish Festival in early March and the long weekend [March 14].

"There is a bit of a lull, but we are probably still sitting at between a third to half a park booked.

"We will be booked out again soon for Easter.

"How busy it will be after Easter is anyone's guess," said Ms Benson.

"It will be interesting to see what winter brings.

"Whether we get that transient population back again now that the border situation has settled down or not."

Frankie at school to help with well being

By Kathy Fennell

It is evident that Frankie, the seven month old resident dog at the Penola High school, holds full control at the school.

Frankie started his job at the school on day one of term one and he greeted all students on their first day.

Principal, Lesley Okholm said: "Frankie is a well being dog and he likes to help students as much as he can."

Year eight student Elodie Burr said: "He is a good, calming dog.

"I use him most days to deal with my stress."

Ashlee Gillon said: "Frankie was fantastic when we were to have our vaccinations.

"He brought so much calmness to us all and made a huge difference."

"He is a wonderful asset to the school and everyone loves him," year 8 student Haylee Moulton said.

Haylee, Ashlee and Elodie all commented that if there was a test coming up, Frankie would soothe their nerves.



From left: Haylee Moulton, Ashlee Gillon, Elodie Burr with Frankie.

He is becoming part of lots of student's learning plans.

Year 11 student Philip is doing a study on Frankie as part of his Year 11 studies. The young poodle puppy had his first groom last week with students helping with the process.

He is also being trained in dog obedience,

although he has been to know to grab a sandwich out of someone's hand.

Frankie wanders throughout the school and is also known to have a nap under the Principal's desk.

As far as feeding goes, he loves his food especially his snacks.

Exploring Kalangadoo

An initiative driven by social media is proving a success in introducing new residents to each other, locals and what the region has to offer.

The public Facebook group, Millicent New Residents and Friends, was created for anyone new to the community or those wanting to meet new people.

Group organisers are holding monthly catch-ups which are proving popular, with numbers of both the online group and the get togethers continuing to grow.

Having already visited Lake McIntyre and the Mt Burr trail walk the group's next meet up will be at Kalangadoo this Sunday.

Meeting at the Kalangadoo Store by 11am, Sandra Young will take attendees on a free guided walk of the town, followed by a tour of the Railway Museum hosted by Peter Savage.

Contact group organisers via the Millicent (and surrounds) new residents and friends Facebook group for further information.



**DON'T BE JUST WARM...
BE STYLISH TOO**





41 Church Street, Penola | (08) 8737 2380

Cottage makeover grant

Penola Branch of the National Trust has been awarded a State heritage tourism grant of almost \$35,000 for the installation of a new bathroom and small kitchenette at Wilson's Cottage in Petticoat Lane.

The project aims to return the building to its original use which will complement the form, character and layout of the original space.

The additions will be built at the back of the cottage with the bathroom being contained in a round, fully lined, corrugated steel structure.

It will be connected by a wooden framed glass filled walkway.

Trust member, Kerry DeGaris said: "The external bathroom facility was designed to minimise the physical impact on any construction work on the fragile historic fabric of the building.

"It will also create a complementary visual element that doesn't compete with the existing building and have minimal impact on the heritage streetscape," she said.

A verandah with guttering will be added to the rear of the building and connected to the bathroom walkway addition.

A small kitchenette, incorporating a stainless steel single sink and under bench refrigerator will be installed on the northern wall of the dining/kitchenette room.

Local builder, John Tregenza, has been contracted to undertake the work and it is envisaged that the project will be completed by the end of this year.

Once completed the cottage will be used as bed and breakfast accommodation which will help generate income for the branch.



Penola National Trust member Evelynne Bowden in front of Wilson's Cottage which will be the focus of a State heritage tourism grant this year.

School shows its true colours to support Sam Matthews

By Kathy Fennell

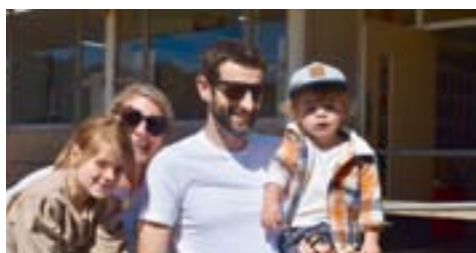
Penola high school students participated in a special Colour Run day last Friday with more than 100 students participating.

The day was organised by the Student Representative Council to raise money for staff member Sam Matthews and his family.

Sam has been diagnosed with bowel cancer.

Various mini carnival games including a staircase, hurdles, slip and slide, a net crawl, paddle pool and water bombing were enjoyed by students.

The event also coincided with Red Apple Day which is a group that raises money for bowel cancer research.



The Matthews family Audrey, Erin, Sam and Jack.



Penola High school students who participated in the Colour Run.

FLOWERS FLOWERS FLOWERS

Brighten someone's day with a surprise flower arrangement.

Local natives, plus big selection of chilled fresh flowers, freshest in town. Made to order.

Free delivery
Penola - Coonawarra.



Di's
Gifts'n'
Flowers

Open 7 days til 5pm
(08) 8737 2284
43 Church Street,
Penola 5277

1254665-HC14-22

Medicine study scholarship opportunity

A call has recently gone out to students from the Wattle Range Council area, currently studying any health related degree, to apply for a \$1,000 scholarship grant.

The grant is offered annually by the Medical Clinic Millicent and funded by the clinic partners as their way of supporting local students studying for a career in health sciences and medical fields.

Applicants need to address certain criteria in their applications including their connection to the Wattle Range Council area, the degree they are studying and where, what they hope to achieve and their goals once they have completed their studies.

Medical Clinic Millicent Practice Manager, Bronwyn Barker, said: "Applicants need to explain what they are going to use the scholarship for and how it will best serve them."

Recipient of the Scholarship Grant last year, Chloe Futcher from Millicent, is studying a Doctor of Medicine at Flinders University in Adelaide.

Ms Futcher told The South Eastern Times: "I'm very grateful to the clinic for their support and I hope to return to the community at the completion of my training to give back."

Applications close on Wednesday, April 30 and applicants are encouraged to email to admin@mcmillicent.com.au expressing interest in the grant and addressing the criteria requested.

2021 Recipient: Chloe Futcher was the Medical Clinic Millicent's 2021 recipient of the \$1,000 scholarship grant. She is shown with clinic partner Dr James Bushell.

Picture: SUPPLIED



Projecting into the past

By Caroline Hammat

New technology will soon be used to tell the story of the historic Glencoe Woolshed after the Glencoe National Trust was successful in its application for a \$2,000 Wattle Range Council Financial Assistance Grant.

The branch's Secretary, Carol Grbich, was pleased to hear of the group's successful application to assist in purchasing and installing a projector inside the 1863 building.

Ms Grbich explained: "Surveys conducted over the last few years found who was visiting the woolshed, it was lots of older shearers, farmers, grey nomads and families with young children.

"We recognised the existing information boards were dense with text and the woolshed is quite dark making the boards difficult to read."

From this research the group decided a video was the solution to communicating the building's history to visitors, with the previously whitewashed walls offering a suitable surface for projections.

Planned to be securely attached on one of the building's large wooden uprights, the projector will be enclosed to protect it from the elements and rogue possums.

A button installed on the pole will start the video when pressed and visitors will be encouraged to pull up a hay bale and enjoy the presentation which will switch off when complete.

The committee spent much of last year using their own voices to tell the story of the woolshed and the seven minute video has already been created.

Invaluable assistance was given to the group by volunteer, Charlie Furr, who used his expertise to bring together and edit the video which includes an excerpt of blade shearing demonstrations.

Total project cost is expected to be around \$5,000 with the balance of the funds coming



Woolshed projection: Secretary of the Glencoe Woolshed National Trust branch, Carol Grbich, leans against the wooden upright that will support the new projector.

from fundraising and entrance fees.

Ms Grbich told The South Eastern Times: "We've been really lucky during Covid that people have continued to visit the woolshed and leave extra money, they have been very generous with donations.

"It's not easy to fundraise for these things

so we are grateful to Wattle Range Council for their support."

The video is the second part of a two part plan to enhance the visitor experience with the previous installation of a soundscape proving successful.

Triggered by door movement the current

soundscape is audio of a working woolshed with sounds of shearers chatting away and the bleating of sheep.

The group hopes to have the projector working within months and, with the existing soundscape, it will offer a rewarding experience for visitors.

2022

DiGiorgio Family Wines

PENOLA CUP

Sunday 17TH April



PenolaRacingClubInc.

General Admission

\$20

Concession

\$10

+

Dining Room Packages Available

BOOK NOW

countryracingsa.com.au



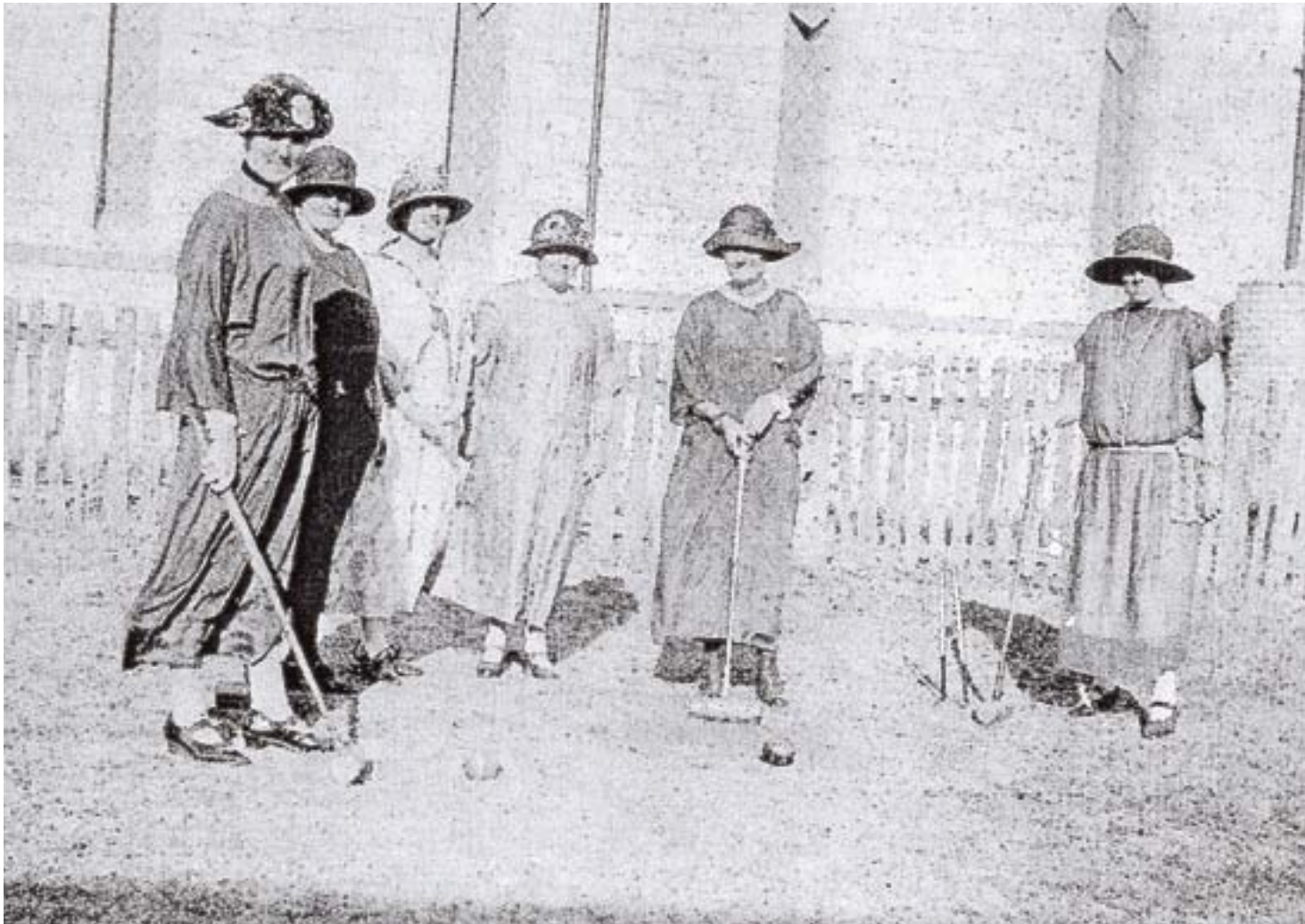












Historic snapshot

By Penola Local History Centre

The first Penola Croquet Club was opened in the area that is now the car park for Wattle Range Council next to the Presbyterian Church.

Border Watch, November 23, 1926

Penola Club

St Andrew's Croquet Club, Penola, held their opening day on Saturday afternoon.

The weather was favourable, and the court was in good order.

Over 20 ladies were present, most of whom took part in the various events arranged by Mrs W Clifford, the secretary.

Rev R Rankin declared the season open, and Mrs D Fullerton, the President, hit the first ball.

Points were scored for each event, and prizes given on the aggregate.

Mrs J A Ricketts secured first place, Mrs F Townsend second and Mrs Hemmings third.

A dainty afternoon tea was provided by the members.



Nangwarry school staffer, Alisha Byrne will be Swinging with the Stars.

Swinging with the Stars bid

Nangwarry Primary School student support officer and early childhood educator, Alisha Byrne is participating in the Stand Like Stone Foundation's Swinging with the Stars event to be held at Mount Gambier's Barn Palais on June 18.

Practice sessions have already started and Ms Byrne said it's not easy.

"The challenge is something way out of my comfort zone," she said.

Ms Byrne's partner for the event will be Jayden Green.

She will be raising money for the Steven Noble Memorial sub fund and there will be events announced in the near future.

Birthday celebration

By Kathy Fennell

Local Tandara resident Pat Boyd celebrated her 80th birthday with twelve friends at the Kalangadoo Hotel on Saturday.

"It was a fantastic day at a great little country pub," she said.

"The meals were fantastic and the hosts certainly treated us well."

The tables were tastefully decorated which added to the birthday atmosphere.

She is travelling to Victoria next week to enjoy another celebration with her relatives.



Pat Boyd celebrated her 80th birthday at the Kalangadoo Hotel on Saturday.

Chance to help out Penola Pony Club

The Penola Pony Club is looking for helpers for the return of its one day event on Sunday, May 15.

To be help at the club grounds, the one day event runs from 8.30am until about 3pm. If there is anyone that would like to volunteer for penciling or jump judging, they would be most welcome.

The club has a fabulous group of riders at the moment, ranging from talented teens who are taking the show jumping world in their stride, to led-rein juniors having fun at rallies.

There is also a core of dedicated juniors who are giving everything a go, developing their riding skills while they decide what their focus will be in the future.

The club is exceptionally lucky to have local horse people involved in the club.

A huge thankyou to Jim and Melinda Moore, Dave Neale, Rachel Clayfield, Sue Thornley, and Wayne and Linda Field.

A special mention also to recently retired chief instructor, Tara Batt who has put in countless hours over many years.

Some club highlights include camp drafting, polocrosse, vaulting, stockmen's



Mum Jess Cook leading her daughter Elini Carlson on her pony Jimmy.

challenge, cross country, showjumping and many games.

If you are interested in joining the pony club, Come and Try memberships are available now with annual memberships due in July. The next rally will be held on Sunday, May 1.

Interested people can contact Belinda Seaman on 0439 081 092 or Secretary Jackie Zema via the facebook page or email to penolaponyclub@hotmail.com.



Amelia Gruetzner jumping on her pony.

Citizen's commendation

Robe resident, David Thomas OAM, received a South Australian Citizen of the Year commendation at Government House in Adelaide last week.

Mr Thomas's award was one of 18 presented by the Governor, Frances Adamson AC.

Receiving the award for his dedication to improving the life of others, Mr Thomas's commitment to community is shown by a long list of organisations that he has been involved in over the decades, including roles assisting young people, sporting clubs and elderly citizens.

Through his work with the Lions Disaster Response and Recovery and Drought Relief Committee, Mr Thomas has supported many impacted by the aftermath of bushfires and drought affected farmers and their families.

Mr Thomas was joined on the night by Mayor of Robe Alison Nunan, his wife Margie and three sons Liam, Jason and Daniel.

"When we arrived I saw so many people lining up to go in, I wasn't expecting that and was surprised."

The theme for the ceremony, reflection, resonated with Mr Thomas.

"Listening to what was being said about the award winners, the word reflection really did strike a chord because I realised the night wasn't about me, it was about a whole group of diverse people that are like minded and working for the community in a lot of different ways; I felt quite special I was a part of that," he said.

It has been a big year for Mr Thomas with many accolades in the last 12 months, including the Hall of Fame award from the Australian Lions Foundation, receiving an OAM in the Queens Birthday honours, Citizen of the Year nomination and the Australia Day commendation.

"This latest award really took on extra meaning on Wednesday night, I didn't really



Commendation received: David Thomas OAM from the District Council of Robe received a commendation award for South Australia's Citizen of the Year.

know what a citizenship commendation entailed but being called up with the award winners was pretty special."

Among the other recipients on the night were Mount Gambier wildlife carer, Julia Dangerfield (formerly of Millicent), receiving a State Young Citizen of the Year commendation.

Ms Dangerfield is always on call for wildlife rescue and has created her own animal refuge at home to care for injured animals.

The demanding job is ongoing and costly, with Ms Dangerfield relying on donations from the public to assist in housing and feeding the animals in her care.

In her efforts to raise public awareness around issues facing our native wildlife, Ms Dangerfield is a passionate advocate for the animals that need it.

The Australia Day Awards, recognising inspirational South Australians, had previously been postponed from January due the impact of Covid-19 affecting the State at the time.



Family pride: David Thomas arriving at Government House for the Australia Day Award ceremony with his wife Margie and sons, Liam, Daniel and Jason. Pictures: SUPPLIED



GO WHERE THE TRADIES GO

Your Local Family-owned Hardware Store

EASTER CATALOGUE SALE ON NOW UNTIL 25TH APRIL

Open 7 Days
 Mon-Fri 8am-5pm
 Sat 9am-2pm
 Sun 10am-2pm
 Closed public holidays

Like us on Facebook & Instagram 

Shop online at www.homehardware.com.au
 23 Arthur Street Penola
 Phone 8737 2281

BUILD STUFF, GET STUFF



JOIN NOW FOR FREE AND START GETTING REWARDED





Residential Building Contractors
 Property Developers & Land Developers

Whether building on your land or ours, our strength lies in individual design and in carefully considering your allotment, your budget and your personality.

(08) 8725 7066

admin@empak.com.au
www.empak.com.au

Shop 3/4, 125 North Terrace
 Conroe Heights Shopping Centre
 Mount Gambier SA 5290



LIC No. BLD 8717. DB-U 16652.

SERVICING THE LIMESTONE COAST & WESTERN VICTORIA SINCE 1945

Swim season extended

The Millicent Swimming Lake and the Penola Pool will have an extended season this year with Wattle Range Council announcing they will remain open for use until April 30.

Keen swimmers will have access to the Penola Pool during regular opening hours when the forecast temperature at 9am is 20 degrees and above, with the exception of Good Friday,

and 24 hour access continues at the Millicent Swimming Lake.

Residents and visitors are encouraged to take advantage of both facilities before they

close for the season.

Due to cooler weather and no heating facilities, the Nangwarry Pool has already closed for the season.

Fun at Penola Pool



Mawson Kidman.



Damien Pitt with daughter Amelia.



Enjoying the swim meet is Kinta Wilson.



At the swim meet from left Lacey Bullock and Alida Brokken.



From left: Juliette Rowland, Chloe Bullock, Tait Kidman.



Oscar Rowland.



Tim and Sarah Kidman.



Mother and son competitors Sarah and Mawson Kidman.

Cafe 43 training

By Kathy Fennell

The aroma of fresh brewed coffee drifted freely at Penola High School's Cafe 43 when students participated in a coffee making session as part of their hospitality lesson recently.

Eight year 10 students were given instruction on how to make coffee by a local barista including making cappuccino, latte, chai, long black, flat white and hot chocolate.

Students learnt how to make a shot of coffee and how to prepare the milk.

Staff were treated to the results and all had positive feedback.

It is planned that Cafe 43 will open in term two for a short time on a Tuesday morning.

There will be coffee available as well as light snacks.



Training at Cafe 43: From left Kaitlin, Taylah, Maddison, Scarlett, Dianne, Shelly, Tara and Yasmin.

Limestone Coast Protection Alliance

welcomes back

THE PENNANT

and

The South Eastern Times

The Penola Pennant and The South Eastern Times have always been valuable assets for informing and supporting the Community against developments which threaten the amenity of our community, so the Limestone Coast Protection Alliance is welcoming the return of these responsible and trustworthy sources of local news.

The Limestone Coast Protection Alliance advises the community to remain vigilant about the quiet incursion of gas mining throughout the Limestone Coast, with seismic testing currently being undertaken by Beach Energy in the vicinity of the Dombey exploration well.

Make sure that you have your Lock the Gate signs clearly showing on your front gate. If you need new signs ring Angus Ralton on 0409 257 841 or Merilyn Paxton on 0429 804 247.

If any fossil fuel company contacts you, you can refuse to see them initially, and we suggest that you ring either of those two contacts listed for assistance urgently, and

for advice as to how to proceed to resist mining on your property, which could threaten your property insurance.

With the change of government in South Australia we see a real threat to the fracking moratorium we fought so hard to achieve being overturned by the new government. Although the new Premier Peter Malinauskas has promised not to do this, he has the numbers in both the lower and upper house to make unchallenged changes to any legislation.

Climate change is a real threat as has been evidenced by unprecedented bushfires and flooding throughout the world over recent years, with serious damage to weather patterns affected by changing climates everywhere. No new fossil fuel mining should be undertaken throughout the world, and we must encourage our governments to start phasing out the use of fossil fuels urgently.

For further information please contact Angus Ralton on 0409 257 841, or Merilyn Paxton on 0429 804 247.



Fun night at the museum



Manning the blacksmiths on the night was Nathan Woodruff.



Tavern regulars Shari Noll, Stephanie Barton and Vicki Noll keeping guests entertained.



Mark Braes studies the deceased, Lord Formley, during the mystery night.



Best dressed Madame Maggie performed by Julie Walker and partner in crime Catherine Hale.



Pirate captain and Millicent Museum Chairman, Barry Long hams it up on the night.



Shari Noll fills tour guide Megan Brennan's tankard to wet the whistle.



Entertaining guests were characters Jan Armit, Phil Golding and Holly Peters.



Adding to the atmosphere were Linda Stark, organist Jennifer Golding and Janine Holding.



Pirate shenanigans played to the hilt by Noel Boyle, Jim Hyland and Alan Correll.



Keeping the kitchen working were young maids played by Tara and Lavisha McNicol.



Tavern goer Des Noll with Chris Hollingsworth who received best actor for her character Maud Robson.

Aerial feral deer count

The Limestone Coast Landscape Board (LC Landscape Board) will undertake an aerial monitoring program for the large abundance of feral deer in the region.

Supported through funding from the South Australian Government Landscape Priorities Fund, the aerial survey will be held from April 11 to April 13 and will target areas where feral deer are suspected to seek shelter.

Some places which will be monitored include conservation parks and private native vegetation focused around Keilira, Taratap, Tilley Swamp, Petherick, Bunbury, Deepwater, Salt Creek, Martin Washpool, Bunbury, Gum Lagoon, and Hanson Scrub.

LC Landscape Board feral deer project officer Aidan Laslett said the monitoring will take place while every effort is made to avoid disturbances to farm houses, working sheds,

horse yards and areas containing livestock.

The aerial monitoring operation will use thermal-assisted technology and is the next step towards the LC Landscape Board achieving eradication of feral deer in the Limestone Coast.

LC Landscape Board general manager Steve Bourne said the control programs have been operating for over 15 years but the spread of the feral deer has appeared to have increased geographically.

"This monitoring program using innovative technology will provide a greater understanding of the numbers of feral deer in the landscape and the scale of effort required with future programs," Mr Bourne said.

"By working together, we can reduce the impact of feral deer on the region's agricultural bottom line and environment."



Minor disturbance: Limestone Coast Landscape Board feral deer project officer Aidan Laslett said the upcoming feral deer aerial monitoring program will take place while trying to avoid disturbance to livestock paddocks, work sheds and farm houses.

Farm research funding

Funding applications have been opened for cattle, sheep and goat producers across Australia who are interested in running local projects to demonstrate on-farm benefits of research and development findings.

Meat and Livestock Australia (MLA) has called for applications regarding its Producer Demonstration Sites (PDS) program - applications opened last week.

The applications will close on May 13 and for projects ranging from two to six years, Levy and Co-contributor funding options will become available.

MLA general manager of research, development and adoption Michael Crowley said the PDS program aims to increase the rate of adoption of key management practices and technologies which improve business profitability, productivity and sustainability.

"Adoption of research outcomes is absolutely critical for receiving the best return on research investments we make on behalf of levy payers," Mr Crowley said.

"By addressing specific productivity priorities, producers are able to implement solutions which deliver direct benefits to their business."

MLA's PDS program delivered \$168.8 million in total net benefits to participating producers for completed projects between 2015 and 2021 according to an independent evaluation.

There are two funding options available for producer groups who wish to participate in the PDS program.

The first is for producer groups who wish to engage in a Levy PDS project, of



Great benefits: MLA general manager of research, development and adoption Michael Crowley said the Producer Demonstration Sites (PDS) program will be able to provide benefits directly to a participant's business, with the Levy and Co-contributor funding options open for participants wishing to join the program.

which they can apply for up to \$25,000 per year for the length of the project.

The second is for groups who want to participate in a Co-contributor PDS project and can apply for up to \$50,000 per year for a project's duration.

All producer groups will need to engage a facilitator who is experienced in group coordination and extension, monitoring and evaluation of on-farm practice change and communication and reporting.

Livestock & Property

rma network Accredited Member

CLEARING SALE

FARM EQUIPMENT, COLLECTABLES, AND HOST OF SUNDRIES
TOO NUMEROUS TO MENTION

Wednesday 13th of April 2022 at 9am

Lynch Road, Coonawarra

Tim Davis Clearing Sale - A/C Sandi Anning

TRACTORS; Chamberlain 4080, David Brown 1210 with post knocker, David Brown 1412, Case C575, Selectamatic 1200, David Brown with FEL, Cronvel Mk IV with FEL, Chamberlain with FEL, Chamberlain with FEL, Fordson Major with Proline auger

LARGE ITEMS; Westfield w80 auger 46ft, Mercedes 911 cherry picker truck, International c1600 (Broken Starter Motor), Ki Ki Roller, 7x4 trailer with stock crate, Assortment of trailers, Braud SB62 vineyard pruner, Silvan 3 Row vineyard sprayer, John Deere 630 header, Johner Shearer 14ft seeder, Treg trailer 8x5, Under vine vineyard sprayer, 2010 Nissan Patrol 3l diesel, 1988 Ford Maverick 4.2 diesel

OTHER ITEMS; Steel sheep yard panels, Steel cattle yard panels, Assorted posts, Droppers, Wire, Assorted railway iron lengths, Stobey poles, Fence posts, Steel cable, Chains, Grader blade, 44 gallon drums, Aarup hay mower, Taeye hay rake, TPW woolpress, Morton Baker woolpress, Honda TRX 250 quad bike, Sheep ramp, Large amounts of scrap metal, Scarifiers, Old farming implements, Tractor tyres, Assorted vehicle tyres, Steel pallet racking, Old farm semi trailer, Chicken boxes, Fuel tanks, Ladders, Windmills, Lamb cradle, Hydraulic power pack, Weed wiper, 30ft boomspray 600l, Hay feeder, Assorted pumps, Other items too numerous to mention

View the list @ www.farmclearingsales.net.au

Contact Darren Maney 0428 849 101 - Sam Burgess 0439 674 781

12541564-JC13-22

Livestock & Property

rma network Accredited Member

49 Church St, Penola
(08) 8737 2695
www.tdcagents.com.au

CLOSING DOWN SALE

Margaret St Meats
Friday 8th April, 12 noon
Meat processing equipment, furniture, refrigeration + more.
Contact : Darren Maney 0428 849 101 or Jamie Gray 0407 905 052

CLEARING SALE

Wednesday 13th of April, 9am
Lynch Road, Coonawarra
Tim Davis Clearing Sale - A/C Sandi Anning
View the list @
www.farmclearingsales.net.au
Contact: Darren Maney 0428 849 101 or Sam Burgess 0439 674 781

TO BE OFFERED ON AuctionsPlus

Friday 8th April 2022
In the Weaner & Yearling Sale
A/C Krongart Pastoral

47 Angus Steers
Weaned. March/April 2021 drop.
EU Accredited. PCAS Eligible. 420kg avg

17 Black Baldy Steers
Weaned. March/April 2021 drop.
EU Accredited. PCAS Eligible. 421kg avg

Contact :
Jamie Gray 0407 905 052

Friday 8th April 2022
In the Weaner & Yearling Sale
A/C WDPB Broadlands Station

100 Angus X Hfd Heifers
May 2021 drop. Weaned 15/1/22.
PCAS eligible

140 Hfd X Hfd Heifers
May/June 2021 drop. Weaned 15/1/22.
PCAS eligible

Contact :
Rob Handbury 0429 131 186

Friday 8th April 2022
In the Weaner & Yearling Sale
A/C Harlock Pastoral

10 Angus X Heifers
5 Angus X Steers
7 Hereford Steers

March/April 2021 drop
EU Accredited
Weaned. PCAS eligible

Contact :
Rob Handbury 0429 131 186

12543883-SG14-22

WEATHER

FORECAST

Warnings

See www.bom.gov.au/australia/warnings

SOUTH AUSTRALIA:

State Forecast:

Dry. Mild to warm with light to moderate southeast to easterly winds and light to moderate afternoon coastal sea breezes.

Monday. Early morning fog patches in the south, then a dry day throughout. Mild to warm grading to hot in the west. Mainly light winds becoming moderate northerly in the west. No significant rainfall throughout the State is expected up until midnight Monday.

Tuesday. A slight to medium chance of showers developing over the south on Tuesday and clearing on Thursday. Mild to warm over the south and warm to hot in the north. Light winds in the east becoming moderate north to northwesterly ahead of a moderate to fresh southwesterly change extending from the west.

Lower South East District:

Partly cloudy. Winds southeasterly 15 to 20 km/h turning southerly 15 to 25 km/h during the day then becoming light during the evening.

Monday. Partly cloudy. The chance of morning fog in the north. Light winds becoming southwesterly 15 to 20 km/h during the day then becoming light during the evening.

VICTORIA:

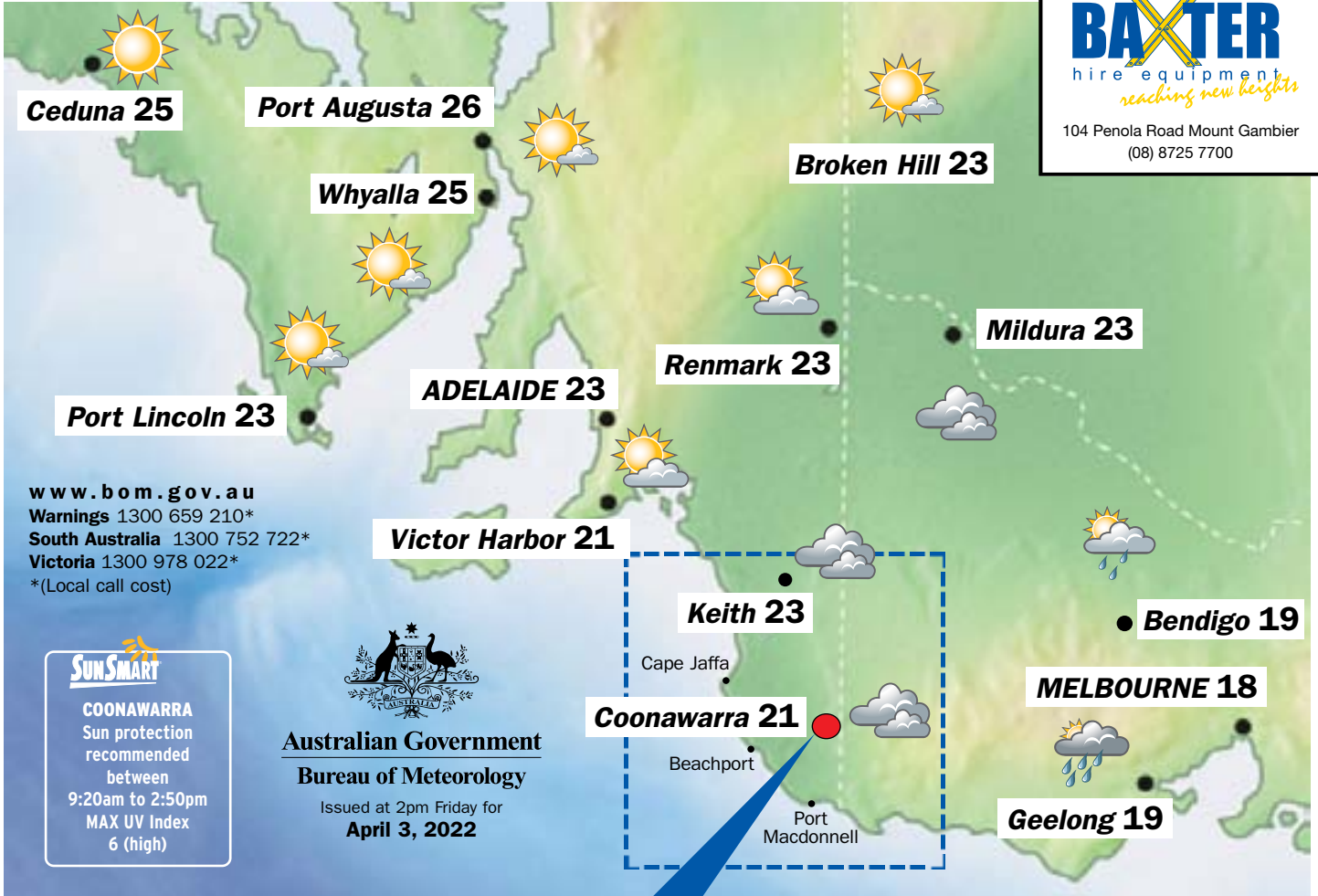
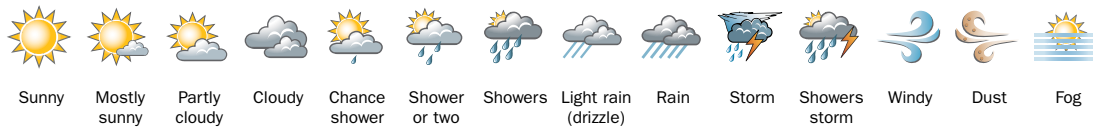
South West District:

Cloudy. Medium (60%) chance of showers in the east, slight (20%) chance elsewhere. Winds southeasterly 15 to 20 km/h tending southerly during the afternoon then becoming light during the evening.

Monday. Partly cloudy. Slight (30%) chance of a shower in the southeast. Light winds becoming southwesterly 15 to 20 km/h during the morning then becoming light during the evening.

COONAWARRA FORECAST

TODAY Cloudy. **21** **TOMORROW** Partly cloudy. **22** **TUESDAY** Shower or two. **23** **WEDNESDAY** Partly cloudy. **24**



www.bom.gov.au
Warnings 1300 659 210*
South Australia 1300 752 722*
Victoria 1300 978 022*
 *(Local call cost)



COONAWARRA
 Sun protection recommended between 9:20am to 2:50pm
 MAX UV Index 6 (high)

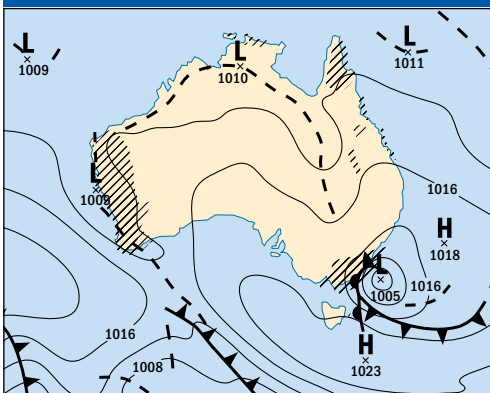
Australian Government
Bureau of Meteorology
 Issued at 2pm Friday for
April 3, 2022

ENJOY YOUR DAY WITH THIS PAGE BROUGHT TO YOU BY

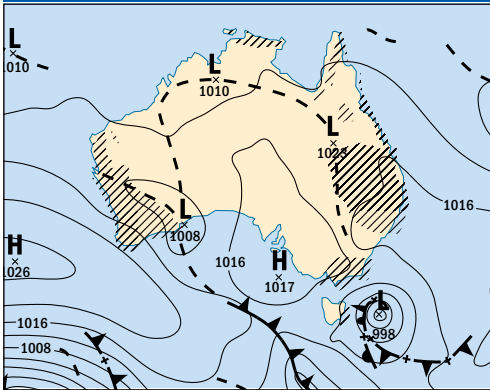


104 Penola Road Mount Gambier (08) 8725 7700

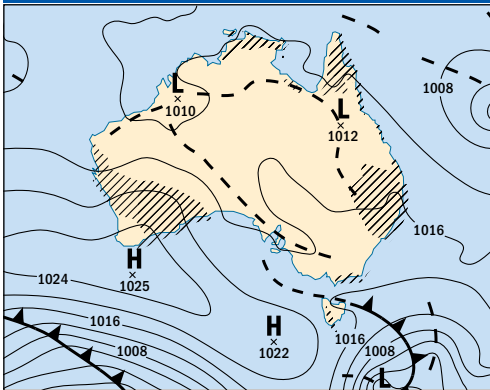
TODAY 10AM



TOMORROW 10AM



TUESDAY 10AM



Forecast Rain 24 hrs to 9am
 1024 hectoPascal (hPa)
 trough
 cold front
 warm front

COASTAL WATERS

South Central Coastal Waters:

Winds: Southeasterly 15 to 20 knots decreasing to about 10 knots during the morning. Seas: 1 to 1.5 metres, decreasing below 1 metre during the morning. 1st Swell: Southwesterly 1 to 1.5 metres, decreasing to around 1 metre during the morning. 2nd Swell: Southeasterly around 1 metre. Weather: Partly cloudy.

Upper South East Coastal Waters:

Murray Mouth to Cape Jaffa
 Winds: Southeasterly 15 to 20 knots decreasing to about 10 knots during the morning then tending southerly 10 to 15 knots during the afternoon. Seas: 1 to 1.5 metres, decreasing to 1 metre during the morning. Swell: Southwesterly 1 to 1.5 metres, decreasing to around 1 metre during the morning. Weather: Partly cloudy.

Lower South East Coastal Waters:

Cape Jaffa to SA-Vic Border
 Winds: Southeasterly 10 to 15 knots turning southerly during the afternoon. Seas: Around 1 metre. 1st Swell: Southwesterly 1 to 1.5 metres, decreasing to around 1 metre during the afternoon or evening. 2nd Swell: Southeasterly around 1 metre. Weather: Partly cloudy.
 SA-Vic Border to Cape Otway
 Winds: Southeasterly 10 to 15 knots becoming southerly below 10 knots during the evening. Seas: Around 1 metre. 1st Swell: Southwesterly 1 to 1.5 metres, increasing to 1.5 to 2 metres in the far east. 2nd Swell: South to southeasterly around 1 metre inshore, increasing to 1 to 1.5 metres offshore. Weather: Cloudy.

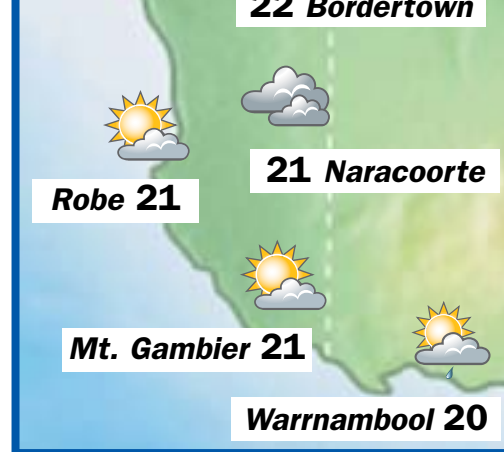
CAPITAL CITIES

City	Condition	Max
Adelaide	Partly cloudy.	23
Brisbane	Partly cloudy.	29
Canberra	Rain at times.	17
Darwin	Partly cloudy.	34
Hobart	Shower or two.	18
Melbourne	Showers.	18
Perth	Showers.	27
Sydney	Mostly sunny.	26

SUN & MOON

	Sunrise	Sunset	Moonrise	Moonset
Sunday	6:22am	5:58pm	8:01am	7:05pm
Monday	6:23am	5:57pm	9:04am	7:34pm
Tuesday	6:24am	5:55pm	10:05am	8:06pm
Wednesday	6:25am	5:54pm	11:06am	8:43pm
Thursday	6:25am	5:52pm	12:04pm	9:26pm
Friday	6:26am	5:51pm	12:59pm	10:15pm

22 Bordertown



TIDES

Beachport

Today:	H:	L:	Tomorrow:	H:	L:	Tuesday:	H:	L:	Wednesday:	H:	L:	Thursday:	H:	L:
	1:36am	0.8m		12:48am	0.8m		1:02am	0.8m		1:14am	0.8m		1:21am	0.7m
	6:41am	0.3m		6:53am	0.2m		7:08am	0.2m		7:23am	0.2m		7:39am	0.2m
	1:08pm	1.0m		1:35pm	1.1m		2:03pm	1.1m		2:30pm	1.1m		2:58pm	1.0m
	7:27pm	0.4m		7:56pm	0.4m		8:23pm	0.5m		8:49pm	0.5m		9:14pm	0.6m

THE WORLD

World conditions yesterday

City	Weather	Max	Min
Athens	fine	22	12
Auckland	fine	24	16
Bangkok	storms	34	24
Beijing	fine	18	3
Berlin	cloudy	7	0
Christchurch	fine	20	8
Denpasar	fine	31	26
Dublin	showers	7	-1
Hong Kong	cool	16	13
Honolulu	showers	28	22
Jakarta	rain	33	24
Johannesburg	fine	27	14
Kuala Lumpur	storms	34	24
London	cloudy	9	1
Los Angeles	sunny	20	12
Madrid	sunny	10	0
Moscow	snow	1	-7
New Delhi	fine	39	19
New York	sunny	12	3
Noumea	sunny	32	25
Paris	fine	8	0
Auckland	fine	24	16
Port Vila	rain	28	23
Seoul	cloudy	13	3
Singapore	storms	34	24
Suva	storms	30	24
Tel Aviv	fine	26	12
Tokyo	fine	13	3
Vancouver	sunny	12	6
Wellington	fine	20	13

Friday:

H:	1:19am	0.7m
L:	7:56am	0.2m
H:	3:28pm	1.0m
L:	9:37pm	0.7m

Port Macdonnell

Today:	H:	1:53am	0.8m
	L:	6:53am	0.3m
	H:	1:34pm	1.0m
	L:	7:48pm	0.4m

Tomorrow:

H:	1:00am	0.8m
L:	7:06am	0.2m
H:	1:56pm	1.1m
L:	8:11pm	0.5m

Tuesday:

H:	1:08am	0.8m
L:	7:22am	0.2m
H:	2:18pm	1.1m
L:	8:37pm	0.5m

Wednesday:

H:	1:17am	0.8m
L:	7:39am	0.1m
H:	2:44pm	1.1m
L:	9:03pm	0.6m

Thursday:

H:	1:17am	0.8m
L:	7:57am	0.2m
H:	3:14pm	1.1m
L:	9:23pm	0.6m

Friday:

H:	1:22am	0.8m
L:	8:15am	0.2m
H:	3:46pm	1.0m
L:	9:37pm	0.7m

GIANT CROSSWORD

No. 039

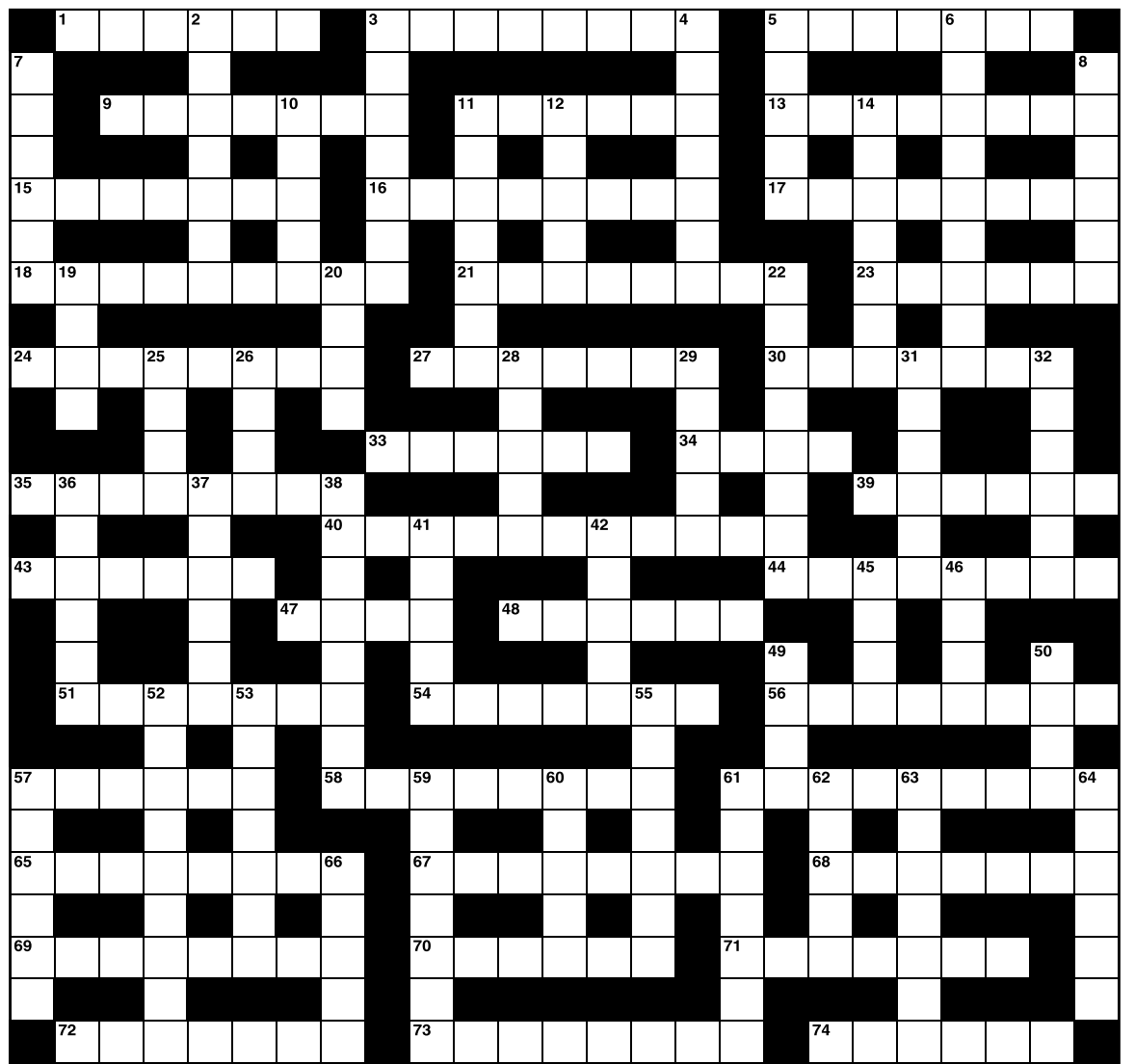
ACROSS

- 1 Oil-engine (6)
- 3 Politicians (8)
- 5 Meat product (7)
- 9 Financial backer (7)
- 11 Relating to mail (6)
- 13 One who works for wages or a salary (8)
- 15 Roman, Venetian etc. (7)
- 16 Grotesque water spout (8)
- 17 User (8)
- 18 Uncertainty of meaning (9)
- 21 Performs surgery (8)
- 23 Senseless folly (6)
- 24 Rapturous (8)
- 27 God of wine (7)
- 30 Long, epic journey (7)
- 33 Polished (6)
- 34 Head of the Roman Catholic Church (4)
- 35 Fine soft wool from goats (8)
- 39 A digit (6)
- 40 Awesome (11)
- 43 Pretending (6)
- 44 Glaswegian, Edinburgher etc.
- 47 Sailor's greeting (4)
- 48 Common salad ingredient (6)
- 51 Snobby (7)
- 54 Child (7)
- 56 Killer (8)
- 57 Adhesive (6)
- 58 Water-rich vegetable (9)
- 61 Disruptions of normal function (9)
- 65 One of a band of resistance fighters (8)
- 67 One who supports the principle of monarchy (8)

- 68 Percussionist (7)
- 69 Repeated non-attendance (8)
- 70 Seem (6)
- 71 Germ-free (7)
- 72 Tackle (7)
- 73 Huge (8)
- 74 Dairy product (6)

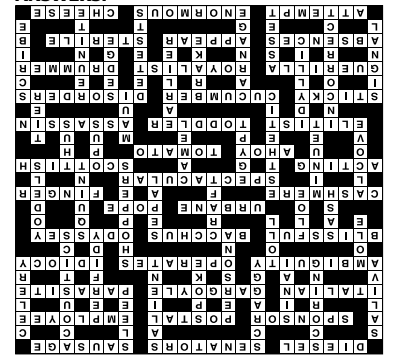
DOWN

- 2 Record of points (7)
- 3 Ragged and thin (7)
- 4 Prominent (7)
- 5 Slumber (5)
- 6 Science of sound (9)
- 7 Slobber (6)
- 8 Vegetable (6)
- 10 Biblical mountain (5)
- 11 Outer personality (7)
- 12 Talked (5)
- 14 Treacherous act (7)
- 19 Mexican sauce (4)
- 20 Charge (4)
- 22 Buyers (8)
- 25 Waistband (4)
- 26 Field of floating ice (4)
- 28 Skill (5)
- 29 Part of the calyx of a flower (5)
- 31 Peer with lowered eyelids (6)
- 32 Tyrolean ululations (6)
- 36 Nook (6)
- 37 Courtly dance observed in triple time (6)
- 38 Artistic expression (US sp.)
- 41 North African nation (5)
- 42 Humped quadruped (5)
- 45 Work (4)
- 46 Consequently (4)
- 49 Pacific demi-god (4)



- 50 Layer (4)
- 52 Wrong (9)
- 53 Charmingly picturesque (7)
- 55 Sooner (7)
- 57 Gesture (6)
- 59 Slaughter (7)
- 60 Stopper (5)
- 61 Hates (7)
- 62 Grass-like plant (5)
- 63 Bring together (7)
- 64 Copier (6)
- 66 Resource (5)

ANSWERS:

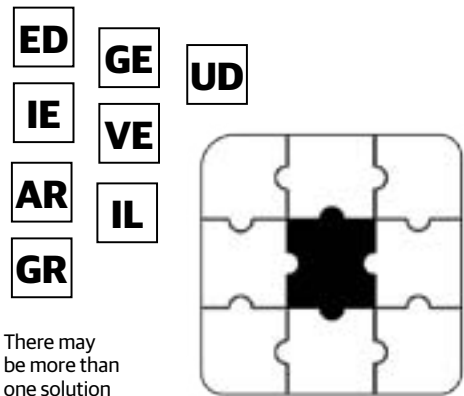


EDGEWORD

No. 039

pm ORIGINAL PUZZLE

Place each of the tiles of letters into the blank jigsaw below to create four six-letter words going across and down.



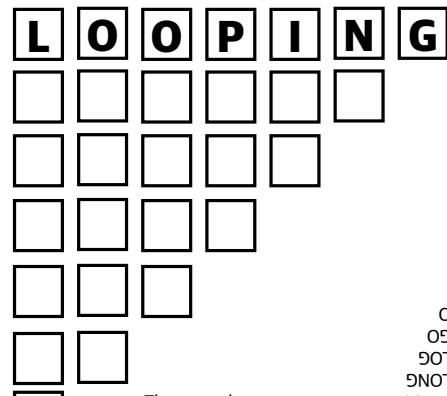
There may be more than one solution

ANSWERS: GRIEVE, GRUDGE, VEILED, GEARED

DROP DOWN

No. 035

Starting with the seven-letter word, drop a letter and form a six-letter word. Continue in this manner until you reach the single letter at the bottom. You can rearrange the letters in each step, if necessary.



There may be more than one possible answer.

ANSWERS: LOOPING, POLLING, LONG, GOT, O9

HOW WELL DO YOU KNOW...

Rove McManus

1. What is McManus's real first name?

- A. John
- B. Henry
- C. Michael
- D. Rove

2. How many Gold Logie awards has McManus won?

- A. None
- B. Three
- C. One
- D. Five

3. Which Blue Heelers actress is he married to?

- A. Lisa McCune
- B. Jane Allsop
- C. Emily Browning
- D. Tasma Walton

4. Which of his shows ran for nine years?

- A. Rove LA
- B. Rove Live
- C. Saturday Night Rove
- D. Show Me The Movie!

5. In which Pixar kids' film does McManus have a voice cameo?

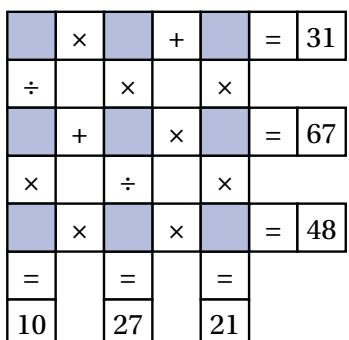
- A. Monsters, Inc
- B. The Good Dinosaur
- C. Finding Nemo
- D. The Incredibles



ANSWERS: 1A, 2B, 3D, 4B, 5C

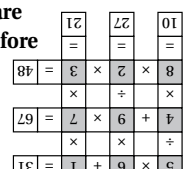
CROSSMATH

No. 039



Insert each number from 1 to 9 in the shaded squares to solve all the horizontal and vertical equations.

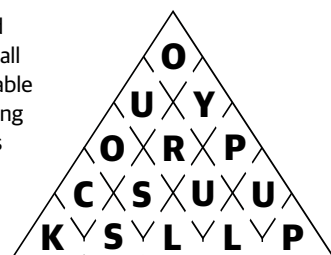
Multiplication and division are performed before addition and subtraction.



WORD TRIANGLE

No. 035

The starting letter could be in any segment, and all subsequent letters are able to be connected following a path through the gaps in the walls. You may only enter each of the segments once, and all letters must be used.

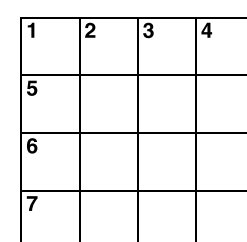


HINT: The answer is a phrase.

ANSWERS: PULL UP YOUR SOCKS

4x4

No. 035



ACROSS

- 1 Rebuke (4)
- 5 Roman garment (4)
- 6 Ripens (4)
- 7 Divine beings (4)

DOWN

- 1 Male deer (4)
- 2 Emblem (4)
- 3 Matured (4)
- 4 Go by (4)

ANSWERS: 1. Slap, 5. Toga, 6. Ages, 7. Gods, DOWN: 1. Stag, 2. Logo, 3. Aged, 4. Pass.



HISTORIC PETTICOAT LANE COTTAGE

A ONE off opportunity to purchase this historic cottage situated in a prime position on the corner of the equally historic Petticoat Lane and Portland Street within walking distance to the Penola CBD with great shopping and quality restaurants. Meticulously restored by a perfectionist whose interest in the area dates back to his childhood the cottage was first built back in

the 1880's from local Red Gum timber and was later on extended in 1902, the cottage exudes character and history.

The cottage has three bedrooms and a large light filled lounge room in the heart of the home which offers the warmth from the slow combustion heating, the Philippe Starck freestanding bath on the Otway Stone flooring footing is the star of the bathroom,

inviting you to fill it to the brim and enjoy a soak after a busy day.

Although the cottage is central to the town and close to everything Penola has to offer, it also quite peaceful here, especially wandering around the well established garden and beautiful trees, which has a lovely feel about it and is easy to maintain.

The enclosed yard is fabulous for

children and pets.

Only minutes from the Coonawarra wineries this cottage would make a sensational B&B and has been run as a successful B&B previously.

The best thing you could do would to book your private inspection with Jo today and see for yourself what this gorgeous cottage has to offer. ●



HOME ESSENTIALS

Address: 7 Portland Street, PENOLA **Description:** 3 bedrooms, 1 bathroom, 1 garage **Price:** \$395,000 **Inspect:** By appointment

Contact: Jo O'Connor, 0429 854 910, PINKERTON PALM HAMLYN & STEEN PTY LTD, PENOLA **RLA:** 315655



28 McArthur Street Penola SA

A Rare Find...

New to the market is this superb, open plan family home, on a massive 3172 m² allotment. There is plenty of space for everyone with 5 bedrooms plus an office or second living area. The master bedroom is huge and has outside access, walk in robe plus a wall of built-in robes and an ensuite! The open plan kitchen is well equipped with dishwasher, pantry, electric oven and lots of bench space. The dining area is spacious and is filled with beautiful north facing sunlight which also streams into the living room,

which connects seamlessly to the decking. The enclosed backyard goes on forever and could have subdivision potential subject to Council consent.

Other impressive features include pergola, rear access to the property, double garage, bore, rainwater plumbed to house, huge slow combustion heater and reverse cycle air conditioning.

An inspection is a must for this amazing property.

5 2 2

\$430,000



163 Grummetts Road Langkoop VIC

Rural Lifestyle Awaits...

Amazing lifestyle opportunity to escape to your own tranquil paradise yet still be only 33 km from Naracoorte, 30 km from Edenhope and 43 km from Penola. With 23 acres of fertile land and incredible shedding the world is your oyster, with the luxury of a four bedroom, two bathroom home to boot. With so many exciting features it's hard to know where to start!?!

The large family home has four good size bedrooms, the master bedroom is spacious with its own walk in robe and beautiful ensuite. The other three bedrooms have polished floor boards and two of them have built-in robes. A wonderful open plan kitchen/dining/lounge area where you can get together to enjoy the beautiful views of the picturesque, established gardens and stunning lake. Watch the birds and wildlife from the comfort of your lounge chair while stoking the slow combustion heating during winter. The stunning kitchen is well equipped with gas hotplates, wall oven and walk in pantry which leads out to the formal dining/lounge area with an open fireplace. Enjoy alfresco entertaining year round under your covered pergola, before sitting around the fire pit near the lake with friends. Run off Christmas lunch by having a hit of tennis on your own court.

Other outstanding features include a three car carport with workshop, shearing shed and massive enclosed storage/machinery shed with raised platform, solar panels, copious amounts of rainwater, fruit trees, huge nursery, wood sheds, bore, chook shed and run.

What is not to love about this fabulous property?? You have peace and quiet yet a great pub is only 15km away!!

Ring Jo today to book your private inspection.

4 2 3

\$595,000



12544488-DL14-22



Network Classifieds

sales@networkclassifieds.com.au
networkclassifieds.com.au

1300 666 808

Trades & Services

Deadline

Placing your classified advert is so easy...

Phone: 1300 666 808
Email: sales@networkclassifieds.com.au
(include your name, address and phone number)

We accept payment by:
VISA/MASTERCARD/EFTPOS/BANK TRANSFER
(1.5% credit card processing fee applies. Cheques and money orders can be posted.)

Deadline for all classifications is 3.30pm Tuesday.

Asbestos Removal

LICENSED IN SA AND VIC FOR THE REMOVAL OF FRIABLE AND NON-FRIABLE ASBESTOS sampling | site clean up registers | inspections demolition | reinstatement soil remediation

08 8733 1454
admin@southeastasbestos.com.au
"For the right Advice. Information and Price"

Computers

**INK • TONER • PRINTERS
PAPER • PRINTER SERVICING**

31 Crouch Street South, Mount Gambier
Ph. 08 8723 6044
www.cartridgeworld.com.au

Plumbing

BIG TREV'S GAS & PLUMBING

Your Plumbing And Gas Fitting Specialists. Servicing Millicent And Surrounds For all:

- New Homes • Home Renovations
- Maintenance • Roof & Guttering Needs

Give Big Trev a call for a free quote on **0419 840 095**

Flowmax Call 0428 270208
Plumbing & Gas Services

SERVICING NARACOORTE & SURROUNDING AREAS

- For All Your Plumbing Needs
- Drain Cleaning
- Hot Water Replacements
- Fully Trained And Experienced Master Plumbers
- 24/7 EMERGENCY SERVICE Plumbing Lic. No. PGE205814

Local professionals in our Trades & Services section of Network Classifieds.

1300 666 808

Tiling

BEAUMONT TILES 1960-2020 60 YEARS

25 Bay Rd. Mount Gambier SA 5290
(08) 8723 9600
Monday - Friday: 7:30am - 5pm
Saturday: 9am - 12pm
#ichosebeaumonts

Tree Lopping/Surgery

**TREE TRIMMING
TREE REMOVAL & STUMP GRINDING
0402 506 077**

Find it in the Real Estate section of Network Classifieds.

General Notices

Public Notices and Event

AGM 2022

The Penola Bowling Club AGM to be held on May 2nd at 7.00 PM at the club.
Any Notices of motions in by April 11th. All members welcome.

There will be no Friday night teas on April 8th.
Next tea night will be in May.

1300 666 808
Visit us online!
networkclassifieds.com.au

Public Notices and Event

TEMPORARY ROAD CLOSURE BEACHPORT

Notice is hereby given that Wattle Range Council pursuant to Section 33 of the Road Traffic Act 1961, declares that Railway Terrace, Beachport (from Foster Street to Beach Road) be closed to vehicular traffic from 7.30 am to 2 pm on Saturday, 16 April 2022 for the purpose of facilitating the Beachport Easter Market Day.

Ben Gower
CHIEF EXECUTIVE OFFICER

General Classifieds

Personal

NICE BLOKE, 62yo, no kids, a bit lonely, seeks loving, caring lady. Phone 0409 677 279.

Advertise in the Professionals section of Network Classifieds.

Employment

Positions Vacant

The Border Watch

Advertising Media Executive

The Border Watch is the regions main source of local news and has a 160 year history with the region. Recently the company announced it is relaunching two historic mastheads, the Penola Pennant and the South Eastern Times.

Qualifications & experience

- Experience in sales and relationship management preferred
- Customer service experience essential
- Must be able to close
- Must be able to overcome objections
- Must be customer focused
- A marketing professional

Tasks & responsibilities

- Providing marketing advice to local businesses Helping them to grow their client base, primarily through print but also using a variety of digital assets.
- Sales
- Relationship management
- Some administration duties
- Face to face client meetings
- Telephone sales
- Overcome objections

Benefits

We are offering a highly motivated and talented individual the opportunity to join our Advertising Sales Team.

This position involves advertising sales, servicing the needs of local businesses, working closely with clients to achieve and exceed customer expectations, maintaining and developing an extensive client base whilst seeking out new business opportunities.

Bookings, copy and layout are an important aspect of the job as are internal and external communication and teamwork.

If you have:

- A background of demonstrated achievement in a sales related environment;
- A desire to work closely with clients in achieving their objectives;
- A fundamental belief in the value of advertising;
- A sound understanding of business principles;
- An empathy for customer service and a desire to provide solutions;
- High level of communication and negotiating skills, both oral and written;
- Knowledge and needs of the market and the ability to develop new opportunities;
- Current driver's licence and reliable vehicle.

Then we want to meet you!

Applications close 15th April 2022, 5pm
To apply for this position please provide your CV along with a cover letter.
Melanie Smith | melanie.smith@tbwtoday.com.au

Employment

Professional

DISCRIMINATION IN ADVERTISING IS UNLAWFUL

The South Australian Equal Opportunity Act 1984 makes it unlawful for an advertiser to show any intention to discriminate on the basis of sex, pregnancy, race, age, marital status, political or religious belief or physical features, disability, lawful sexual activity/sexual orientation, HIV/AIDS status or on the basis of being associated with a person with one of the above characteristics, unless covered by an exception under the Act. As Network Classifieds could be legally liable if an unlawful advertisement is printed, Network Classifieds will not accept advertisements that appear to break the law. For more information about discrimination in advertising, contact your legal advisers or the Equal Opportunity Commission.

Announcements

Deaths

COLBERT
Rex William Joseph
08.09.1942 - 01.04.2022

Passed away at Kapunda Hospital.

Much loved brother, brother-in-law and uncle of Les, Anne, Mark and Leanne, Scott and Michele, Stephen and families.

At peace

The relatives and friends of the late Rex Colbert are invited to attend at Penola Gardens Cemetery for his funeral on Tuesday 12th of April at 11am.

Funeral Services

SCHAPEL
Family and friends of the late Mrs Madeliene Josephine Schapel are invited to attend her Funeral Service, being held at the Millicent Salvation Army Church, Bramwell Street Millicent, on Friday 8th April 2022 commencing at 2pm. Followed by a private cremation.

Please be advised current COVID-19 restrictions apply, masks are required to be worn inside the church.

Wattle Range Funerals
17 Short Street, Millicent
08 8733 2067
www.wattlerangefunerals.com.au

SCHAPEL
Madeliene Josephine
Passed away 25th March 2022 at the Mount Gambier Hospital.

Loving wife of Glenn Schapel for 45 years.
Loved mother of Carl and Adele.
Sister of Sylvia, Virginia and Robert (dec.).

*Gone not forgotten
Gone with God*

Wattle Range Funerals
17 Short Street, Millicent
08 8733 2067
www.wattlerangefunerals.com.au

Place your Announcement Notice with us.

Phone: 1300 666 808



Advertise with us and get better results

CALL: 1300 666 808



Men's Triples runners-up Graham Crowder, Steve Farrell and Graeme Smith.



Cos Fours winners George Dratton, Clive Baxter, Dwayne Dolling and Robbie Dahler.

Robe Bowls tournament

The Robe Bowls Club held a two-day tournament on the weekend, with Cos Fours on Saturday and Men's Triples on Sunday.

Dwayne Dolling, Robbie Dahler, Clive Baxter and George Draffen claimed the win in the Cos Fours with 87 points.

They were followed by Heidi Gribble, Richard Draffen and Darren Grant second with a score of 83 ½ points.

Di Scott, Keith Jarrad, Mike Rivett and Steve Hyland finished third with 82 ½ points.

The top four was rounded out by Tracey Wilmott, Helen Vawser, Rod Wilmott and Jack Vawser.

The Men's Triples took place the next day as Bill Armfield, Bill Scott and Jack Vawser claimed the win with 84 ½ points.

Graham Crowder, Graeme Smith and Steve Farrell finished runners-up with 81 ½ points.

Rob Morgan, Peter Smith and Plummie Werchon claimed third place with 73 ½ points ahead of Lindsay Williams, Gary Hamilton and George Draffen in fourth with 69 ½ points.

Thursday social bowls attracted 23 players, including four visitors from Victoria, where two games of 12 ends were played.

Robbie Lawrie, Kerrie Boyd and Garry Hamilton won with 55 points on a count-back from Errol Jennings, Lorraine Denning and Lindsay Williams.



Men's Triples winners Bill Armfield, Jack Vawser and Bill Scott with sponsor Errol Jennings (second from left).

Pictures: SUBMITTED

Scanlon claims victory in nail-biting game

Millicent Bowls Men's Veteran singles semi-finals took place last week, with a format of two games and the first bowler to 21 shots named the winner.

The first semi-final was between Peter Hyland and Derk Pietersma, where Hyland claimed victory.

He was soon joined by Peter Scanlon, who won his semi-final against John Scudds. On Friday the grand final was a thrilling contest.

After eight ends scores were tied, with both bowlers on nine shots each.

The scores remained tied after 14 ends and by the 21st end, both players sat on 18 shots and needed three shots to become champion.

Hyland won the next end to take a two-shot lead.

However, in dramatic circumstances, Scanlon managed to clinch three shots on the final end to steal victory from the clutches of defeat and win the title.



Peter Scanlon claimed a dramatic one-shot Veteran Singles Championship grand final victory over Peter Hyland at Millicent Bowls Club. Picture: SUBMITTED

Veteran Carthew bowls over competition on the greens

The Women's Veteran Singles Championship took place last week at the Millicent Bowls Club where the first bowler to reach 21 shots in each game was determined the winner.

The first semi-final was between Mary Campbell and Faye Hill, with Campbell claiming the win to book a berth in the grand final.

The second semi-final was between Heather Carthew and Robin Rolfe.

Carthew joined Campbell in the grand final after her victory, then backed up her impressive performance with an early lead over Campbell in the grand final.

After nine ends were completed, the scores were 8-3, with Carthew ahead by five shots.

Campbell clawed her way back into the game and by the 21st end she trailed by just one shot as Carthew held a slender 15-14 lead.

Carthew held her nerve and claimed victory at the 26th end in a grandstand finale to claim the title of Millicent Bowls Club Veteran Ladies Singles champion.

She can now take part in the Ladies' Champion of Champion Veteran Singles for the Lower South East Bowls Association.



Millicent Bowls Club ladies Veterans Singles runner-up Mary Campbell and winner Heather Carthew. Picture: SUBMITTED



Royal Flying Doctor Service representatives Val Hunt (left) and Lorraine Hunt (right), alongside Millicent Bowls Club president Peter Hyland.

Pictures: SUBMITTED

Millicent Bowls fundraising day

Millicent Bowls Club banded together to raise funds for the Royal Flying Doctor Service (RFDS) on Sunday.

The one-game competition, played over 16 ends, attracted a field of 56. The Mossies team, which consisted of Garry Wilson, George Hobson, Merle Stevens and Lorraine Hyland,

claimed victory on the day with a score of 29+6.

Runners-up were night-bowlers, Jim Taylor, Barb Leicester, Chris Vearing and Jamie Vearing with a score of 28+13.

The club ran a wrong-bias tin over the season to raise money every time a player put a bowl down on the wrong bias.

The program raised \$645.50, while the fundraising day added \$280 in greens fees and \$380 from a raffle, for a grand total to \$1306.50 for the RFDS.

Treasurer of the Past Presidents' Association, Derk Pietersma, also presented a cheque of \$200 to the RFDS.



Jim Taylor, Barb Leicester, Chris Vearing and Jamie Vearing finished in second place on Sunday at the Millicent Bowls Club.



Garry Wilson (left), George Hobson, Merle Stevens and Lorraine Hyland claimed the win in the Royal Flying Doctors fundraiser.

Penola Bowls winners at greens recently



Premiers: Kay Batt (left), Gardine Williams, Sue McShane, Kay Fennell, Margaret Rowntree, Heather Lambert, Jean Rogers, Christine Skeer and Gail Hetherington. The division 2 Penola side faced Mount Gambier in the grand final on March 11. Penola claimed the title with a 12-shot win over Mount Gambier to win the Women's Division 2 Premiership.



Men's handicap pairs: Bruce Brodie (left), Don Kilsby, Brian Deveraux and Marcus Deveraux. On Saturday, the two teams faced each other in the grand final of the Men's Handicap Pairs. The father-son combination of Brian and Marcus Deveraux, claimed the title over Brodie and Kilsby in a close game.

Pictures: SUBMITTED

Junior Country basketball

Millicent Magic Under 12 and Under 16 basketballers returned mixed fortunes at the Junior Country Basketball Championships held recently in Adelaide.

Teams played at various venues across Adelaide, including St Clair Recreation Reserve, Port Adelaide Basketball Stadium, Wayville Sports Centre and Morphett Vale Basketball stadium.

The Millicent Under 12 Girls Division 3 side had a great tournament as they reached the grand final after some impressive performances.

Millicent had a shaky start to the competition, after they lost their opening game by three points against Great Southern.

However, they quickly changed their fortunes and claimed three consecutive wins before losing to Broken Hill.

The two sides met each other again in the grand final and Broken Hill again proved to be one of the strongest sides in the tournament.

Millicent defended bravely, but was unable to find the basket regularly as Broken Hill claimed the title with a 23-point victory.

The Under 16 Boys Division 5 team was dominant in the opening stages of the tournament, winning their opening four games.

The Magic showed their strength in their second game, with an impressive 50-point win over Eastern Hills.

They faced Naracoorte in the grand final in a rematch of the opening game where the Magic claimed a 24-point win over Naracoorte.

Millicent entered the game full of confidence and faced a close contest throughout the grand final.

Naracoorte was impressive in defence and restricted Millicent to just the one point in the final quarter to claim a 16-point win and the title.

In division 1, the Millicent Under 16 Boys were competitive throughout the tournament and reached the semi-final round.

Their weekend started strongly as they won three of their opening four games to make the finals.

The Magic were dominant in offense as they scored 70 points against Naracoorte in their third game.

The semi-final was a close encounter against Barossa Valley and the Magic took control early to build a first-quarter lead.

However, Barossa fought back to level the scores by the end of the third quarter.

Millicent was unable to match the intensity of Barossa as they bowed out of the semi-final in a narrow four-point loss.

It was a similar fate for the Under 12 Girls Division 1 side, also knocked out in the semi-final.

Millicent had a perfect start to the tournament as they won both of their round-robin games in dominant fashion.

Their strength continued into the qualifying-final as they defeated the Whyalla Steelers by 16 points.

The semi-final against Riverland went down to the wire and Millicent led by 15 points heading into the main break.

However, Riverland turned the tide in the second half and restricted Millicent to just eight points in the second half.

Millicent were unable to hold on as Riverland claimed a dramatic one-point win.



Nangwarry's Ange Pratt look to take possession under plenty of pressure from Tantanoola's Tayla Rowe.



Tantanoola shooter Emma Gould was simply too strong for the Nangwarry defence on Saturday, helping her side to a strong victory. Pictures: TREVOR JACKSON

Big win over Nangwarry

Tantanoola 88 d Nangwarry 30

Tantanoola kicked off its 2022 Mid South East netball campaign in style with a huge win over Nangwarry.

The Tigers won the toss and took the first centre pass, then converting quickly through Emma Gould to set the scene.

The visiting Saints responded with quick movement from Kylie Heaver on the wing and a safe delivery into her goalies to put their first score on the board.

The Tiger's defensive end stepped up early, with Kate Bromley and Tayla Rowe causing

havoc for the Nangwarry shooters.

Tantanoola was able to convert regularly through Gould, who did not look like missing a shot, to go to the first break up by 12.

No changes came from the home side in the second term, while Nangwarry looked to shut down Gould, with Hayley Burner moving back to keeper.

However, Gould proved too strong with a further 17 goals to her name.

Shandeen Balshaw added some pace for the Saints with a move to wing defence, while Nangwarry shooter Tahlia Wilson found her

range and added to the total.

By half time Tantanoola had shown its strength with a 44-20 lead.

Both sides made changes in the third term, with the Tiger's having a mid-court shuffle.

Kristie Varcoe took the centre bib and utilised her speed through the middle, with Casey Walker moving to wing defence and Madi Kelly to wing attack.

Nangwarry's Taysha Marshall went to wing defence, Balshaw to goal defence and Shannon Higgins back to keeper, with Burner going

to the bench.

Ange Pratt stepped up for the Saints and did not miss for the quarter but heading into the final term the tigers were up 67-26.

The contest slowed up somewhat in the final stanza, as the warm conditions began to take their toll.

The Tigers were still in control and in the end claimed a comfortable victory.

Best players for Tantanoola were Gould and Bromley, while Pratt and Kylie Heaver, were given the nod for the Saints.

Demons up for the challenge

Port MacDonnell 38 d Kongorong 30

In a tight contest fitting of an opening-round clash, Port MacDonnell claimed a 38-30 victory over Kongorong in Round 1 of Mid South East netball.

Windy conditions greeted players at the Kongorong venue, with the Demons out of the blocks fast, as Alana Winter worked hard over the shot at goal defence to then drive the ball down the court and add a real sense of pressure early in the game.

The young Hawks took time to settle, with the Port MacDonnell attack line getting a good look at the ball, to take a three-goal lead to the first break.

The wind picked in the second term and caused issues for both teams.

Port MacDonnell's Cody Manning and Kongorong's Riley Buckingham battled hard on the wing, both influential for their respective sides.

The Demons' shooters had a particularly dominant quarter, with Brooke Williams on target at goal attack, shooting five goals from six attempts, despite the windy conditions.

The Demons pushed their lead out by another goal to lead by four at the the main break.

The Hawks went into the third quarter with a renewed effort, as the defensive end did not give the Demons any room to move.

Emily Lightbody and Tori McIntyre combined well in the circle, aided with Buckingham's relentless pressure on the wing, which created turnovers to give Kongorong the chance to close the margin.

The result was a one-point game at the final break, with the home side down but right in the contest.

Both teams continued to fight hard de-



Sarah Gardin reached a major milestone on the weekend as she clocked up her 250th game for Kongorong.

fensively in the final term, while Winter and Megan Hein worked hard at the defensive end for the Demons.



Megan Bowering played her 50th game for Kongorong on the weekend. Pictures: SUBMITTED

The fast-paced contest continued to the final whistle, with the Demons claiming the win after an epic battle.

Best players for Kongorong were Buckingham and Evie Sealey, while Winter was named best for the Demons.



Mount Burr's Ebony Clark claims possession under pressure from Hatherleigh defender Lara McGregor.

Pictures: TREVOR JACKSON

Eagles claim nail-biter

Hatherleigh 37 d Mount Burr 34

In what was the closest contest in the opening round of Mid South East netball, Hatherleigh claimed a hard fought 37-34 victory over a gallant Mount Burr.

Mount Burr included new and returning players Olivia Dean, Zoe Brown and Meg Fennell on their home court, while Hatherleigh welcomed Erin Watson and Demi Vanderhorst back into the A Grade side.

The home side scored the opening goal and it continued to be a tight tussle for the quarter, with Laura Schultz and Fennell feeding well to the goalies.

Simone Westerman played tight defence on the wing for the Mozzies, while Watson had drive into the goal circle to Maddie Redman, who finished off with accuracy for Hatherleigh.

By the first break the Eagles were up by three goals to set the scene for a real nail-biter.

Redman and Mount Burr's Ebony Clark were the focal point in their respective goal circles, while Lara MacGregor applied defensive pressure for Hatherleigh to make Brown work hard for every possession.

Mount Burr's Maddi Haggett applied intense pressure in the goal circle to limit the opportunities for Hatherleigh, working well with youngster Olivia Dean to create turnovers and win the quarter but the Eagles remained in front at the main break, albeit by a solitary goal.

Changes for Hatherleigh at half time saw Abby Wight on at goal shooter, with Redman

moving to goal attack.

Mount Burr replaced Brown with Lauren Wheeler at goal attack.

Haggett continued to apply pressure at goal defence, creating turnovers and limiting easy shots close to the ring for the Eagles.

Wight was the focal point in the goal circle, shooting with accuracy, while Westerman continued to apply pressure at wing defence for the Mozzies, forcing Watson and Georgia Hunter at wing attack to change their driving game.

The quarter continued to be a close one, with Haggett and MacGregor creating turnovers for their respective sides.

Clark continued to score for the Mozzies to win the quarter and take a one-goal lead into the final term.

Redman moved to goal keeper for Hatherleigh in the final quarter, while Vanderhorst came back on to goal attack.

Zoe Brown came back on to goal attack for Mount Burr, with the final stanza set up for an epic contest.

It did not disappoint, as the game went to a new level.

Hatherleigh showed more patience with the ball in attack, with less unforced errors.

That patience and some strong defensive rebounds saw the Eagles turn the game in their favour for a hard-fought three-goal win.

Best players for Mount Burr were Haggett and Olivia Dean, while Hatherleigh's best were Sarah Broadhead and Redman.



Hatherleigh shooter Maddie Redman looks to take possession of a highball during the Eagles' win over Mount Burr on Saturday.

Confident Murphies show strength on the court

Glencoe 57 d Kalangadoo 30

Glencoe began the Mid South East netball season in style with a 57-30 victory over Kalangadoo on Saturday.

Kalangadoo debuted several players and took a while to gather momentum against the confident Murphies.

Glencoe started the opening term strongly and applied pressure from the first whistle, as the defensive combination of Sarah Edwards and Chantelle Cocks caused early turnovers against the Kalangadoo goalie

combination of Estella Serle and Kori Collins.

Glencoe's goal shooters Jenna Paproth and Malinda Markiewicz found plenty of space and rewarded their side's defensive effort to go to the first break with an eight-goal advantage.

Both teams remained unchanged during the second quarter and Glencoe increased the intensity, with Donna Jaeschke running hard and feeding her goalies accurately.

Edwards and Collins had a tight contest,

with Edwards making Collins earn every possession.

By the main break Glencoe had created a 22-goal lead to put the Magpies on notice.

The Murphies made no positional changes at half time, where Kalangadoo switched the goalie combination and moved Sophie Wrightson into centre.

In a tightly-contested tussle with Kalangadoo defenders Reanna Wetherall and Shanen Pulkkinen working hard to create turnovers and curve Glencoe's momentum, which re-

sulted in an evenly-scored quarter.

The final quarter continued at a high intensity, with Glencoe's mid-court positioning well to feed their goalies with precision.

Cocks continued to work hard on Collins, who was positioning well for her feeders.

In the end Glencoe finished the game strong to kick the season off with a solid victory.

Jaeschke and Cocks were named best for the Murphies, while the Magpies gave the votes to Wrightson and Kirsty Egan.

Mossies stung by Eagles

By Trevor Jackson

Hatherleigh 20.16 (136) d Mount Burr 7.3 (45)
Hatherleigh showed its strength in its Mid South East football Round 1 clash with Mount Burr on Saturday.

With the Mozzies on their home deck and a memorial for Ann Guyett, there was plenty to play for.

The opening term certainly put the Eagles on notice, as Mount Burr began strong and led 3.1 (19) to 1.6 (12) at the first break.

However, from there it was all Hatherleigh as the Eagles started to find their feet and the big sticks.

By the long break the Eagles had not only closed the margin, but opened a 40-point lead as they settled into their work and expanded their dominance until the final siren.

Hatherleigh enjoyed a spread of goal scorers, including coach Jake Dowdy with six majors.

Jack Skeer contributed four, Jordan Galpin three and Joe Rayson two, which provided a tough forward line for the Mozzies to defend.

Dowdy said he was "100 per cent happy" happy with the outcome, despite the early jump from the home side.

"I thought we played well," he said.

"Mount Burr come at us pretty early, played some good footy and put us under pressure.

"We got the ball rolling, got it on the outside and on our terms."

That first-quarter blast from the Mozzies was something Dowdy said he expected.

"I think when we played them last year, early on they were good," he said.

"If you give them a stiff they stick around.

"They also had a memorial on the day so they had a fair bit to play for.

"I was expecting them to come out pretty hard."

From there it was a matter of turning the tide and Dowdy knew the Mozzies would throw everything at them in the next term.

"We just had to settle," he said.

"We were a bit jittery I think, a bit too excited because it was Round 1.

"We had three or four blokes to the contest rather than some staying out.

"We were getting in each other's way.

"Towards the end of the first quarter we started winning the ball but our delivery inside 50 was pretty poor."

After addressing that fact the Eagles came out firing in the second quarter and turned the game on its head.

The spread of goal scorers made life difficult for the Mozzies, as the Eagles ramped up their attack.

"We ended up going with a pretty tall forward line," Dowdy said.

"The boys are good with their movements and second or third leads, which created a lot



Hatherleigh's Jack Skeer takes a strong mark during the Eagles big win over Mount Burr on Saturday. Pictures: TREVOR JACKSON

of space and the mid-field started to get on top.

"When you have Will Chay and Jordy Galpin, blokes like them kicking into the 50, it makes it pretty easy in the 50 sometimes."

Dowdy praised Chay for his efforts, which were an unknown to the coach until the last season.

"It is only my second year coaching the club and last year I didn't know much about him but he really impressed," he said.

"He can play anywhere - down back, middle, up forward.

"He never loses a one-on-one and has really good skills."

As for a first-round hitout, Dowdy said he was pleased, with plenty still to work on as the season unfolds.

"I think the biggest thing we have been trying to work on is we get a lot of inside 50s but struggle to convert that to scores," he said.

"Last year we struggled with a lot of injuries so our forward line was never set.

"I was impressed with how many scores we got from inside 50s on Saturday."



Mount Burr's Josh Wallis and Hatherleigh's Jake Dowdy contest a mark during Round 1 of Mid South East football on Saturday.

Reigning premiers hold on in front of home crowd

By Trevor Jackson

Port MacDonnell 14.16 (100) d Kongorong 11.9 (75)

As the reigning Mid South East football premiers, Port MacDonnell kicked off its season with a win but it was certainly not an easy task.

Kongorong pushed the Demons right to the final siren, after leading early in the game.

The Demons began to turn the tide in the second term and opened a small margin before the Hawks again fought back in the third.

However, the Demons had done enough to hold and record a 25-point win, a good margin in any game.

Having lost several players from the 2021 premiership side, the Demons were always going to look somewhat different in 2022.

with that in mind, the usual suspects such as Ned Wilke, Tim Sullivan, Kev Thomson and coach Simon Merrett stood up and found the goals when required.

Add to that a second-best effort from Will MacDonald and the Demons certainly came up with the goods.

Considering a disrupted pre-season due to the ground being renovated, Merrett was pleased with the final result against a tough Kongorong outfit.

"They dished it out and were pretty well drilled," he said.

"I wouldn't say we were surprised but it was a different looking Kongorong than we have seen in the past."

Merrett said his side was slow out of the blocks, on a day where the wind had a reasonable effect on the final result.

"It was a pretty strong breeze and probably worth three or four goals," he said.

"Even though we were down early we were still getting our shots and I thought we were looking all right.

"But we have plenty to work on.

"We tried to get our fitness to a level to get the job done this week but at the same time we didn't want to peak too early be-

cause we have three weeks off before we play again.

"That will give us a good chance to work on our fitness."

Merrett said he was pleased with the defensive effort across the board, while there was still room to improve at the attacking end of the ground.

However, he was pleased to have 30 shots on goals, with some fine tuning required to make the most of the opportunities.

Up forward Merrett said MacDonald and Sullivan dominated in the air and were probably the difference at the end of the day.

"They were probably the two best players on the ground," he said.

"It was pleasing to see those guys stand up."

Merrett's focus quickly shifted, with the club's next challenge the grand final rematch against Kalangadoo after the Easter break.

After the Magpies dismantled Glencoe on Saturday, it will certainly be a big challenge.

"We had a few blokes out on the weekend

which was a bit unfortunate but hopefully we can keep on building," he said.

"We have Kalangadoo next game and just looking at the results, it will be a really good test to see where we are at.

"I would have thought they would come out and have a crack and try to get a bit back on us from last year.

"We are excited ... you want to play the best sides to see where you are at."

As for the Round 1 result, Merrett said the following few rounds would be more important to see where the Demons sit in the scheme of things.

"I don't take a lot out of Round 1," he said.

"You scrap through and try to get the points then move on.

"The competition will find out who sits where in the next month or so.

"The guys have done the work - we don't go as deep as we did last year but the guys want to learn and improve.

"When they have that mind set you are capable of anything."

Tigers hold off Nangwarry

By Trevor Jackson

Tantanoola 16.20 116 d Nangwarry 16.9 105

It was a tough Round 1 Mid South East football win for Tantanoola on Saturday.

With the game transferred from Nangwarry, the Tigers enjoyed a home-ground advantage but someone forgot to tell the Saints.

In a turnaround from recent seasons, where the Saints struggled to kick a score, the Tigers had to fight right to the final siren to claim the points.

In fact, Nangwarry led early in the contest before the Tigers found their feet and began to apply scoreboard pressure.

While Tantanoola closed the margin leading to the main break, scores were tied and the Saints were right in the contest.

From there little separated the two sides and it was anyone's guess who would salute at the end of the day.

Nangwarry was buoyed by an eight-goal haul from forward Andrew Hyland, who provided a strong target inside 50 and finished off with style.

But the Tigers had plenty of goal kickers of their own, including coach Jak Ryan who bagged six majors.

Troy Hatt and Braydn Reilly kicked three each, while Jack Dawe and Liam English added two each.

While Ryan was pleased with the outcome, he said it was certainly a wakeup call for the Tigers.

"It opened a few boys eyes to where they are fitness wise," he said.

"I think Nangwarry came in with a lot of confidence and I think my boys went in expecting the same old story.

"It kind of made them pull their fingers out after a quarter or two."

Ryan said the Saints would not go away, with plenty to prove after such a long time in the wilderness.

"They have had about eight years of something to prove," he said.

"That first win is important to them."

Tantanoola's goals came from various areas, including Dawe and Hatt from the mid-field, which showed a lot of run through the middle of the ground under plenty of pressure.

The chance of a victory hinged on the Tigers' ability to stop Hyland up forward, which Ryan addressed early in the contest.

"About mid-way through the second quarter we took Zane Walker off (Hyland) and Will Wright went there," he said.

"To his credit he knew where he could kick goals from.

"He found himself in the deep pockets and was happy as Larry to kick them from there.

"But our mid-field also needed to shut down their delivery."



Tantanoola's Jack Dawe looks to break free in the mid-field during Saturday's win over Nangwarry.

Ryan said that mid-field strength would take some time to develop.

"Last year myself and Jack Dawe didn't have a chance to bond much due to my injury," he said.

"I sat up forward a fair bit, so this was the first game we got to bond a bit.

"We were getting plenty of it so now it is the next stage - after we get plenty of it to get it

into the forward line.

"Within a few games we will be able to give a wink or a nod and know which way we were going."

While a win is the ultimate result in any round of football, Ryan said it was more of a relief to claim the points.

"Towards the end the celebration was more like we dodged a bullet," he said.

"I know the boys can play a lot better than that - it was the one-percenter skill areas we were lacking, simple marks, simple hand balls and some decision making.

"We have a lot to learn which is good.

"Rather than going out and winning by 100 points, where you don't get much out of it, this way we can work on certain structures ready for Robe this week."

Magpies stamp their authority in first round game

By Trevor Jackson

Kalangadoo 23.13 (151) d Glencoe 5.8 (38)

Kalangadoo Football Club took the first step to return to the pointy end of the Mid South East ladder after a big win in the opening round on Saturday.

The Magpies' never looked in doubt, despite Glencoe coming out of the blocks hard and fast.

In a relatively even first term, Kalangadoo was on top but by just nine points.

In the second quarter the Magpies began to find their feet and control the game.

By the final break the score had blown out and the Magpies simply pushed on from there.

Kalangadoo coach Kevin Stark said while it was good to record a strong victory, Glencoe was a worthy opponent.

"Glencoe took it up to us and the first half was pretty tight," he said.

"In Round 1 you are getting used to real game pressure and once we managed to settle, we began to kick away."

It was a scenario Stark said he expected,

despite some suggesting the game would be over by the half-time break.

"I think a lot of people underrated what was going to happen," he said.

"No team will roll over in the first quarter, every team will fight hard and towards the end we may have been a bit fitter.

"We managed to settle our own game plan and to execute that.

"I thought from their side there was plenty of motivation to come out pretty hard and try to stick it to us."

Goals were plentiful and shared around, with three to both Ben Gregory and James Pratt, while Tye McManus, Andrew Stone, Patrick Davies, Matthew Davies and Alex Lyon contributed two each.

Stark said it was pleasing to see that unfold, rather than have just a couple of players doing to the bulk of the scoring.

"We have a lot of goal kicking prospects and don't want them all going through the one person and become predictable," he said.

"We can have all six forwards and mid-fielders who rotate down there kicking goals,

which should make us hard to defend."

While the Magpies went to the final break with a big 88-point advantage, they did not rest on their laurels.

The final stanza saw them bang on another five major scores, while limiting the Murphies to just one.

It was all a part of the overall game plan Stark hopes will become a major focus for his side.

"I think that is important in any game if you have it in the bag or not," he said.

"We don't want any bad habits to creep in at any point of a game.

"If we do manage to get away, we really want to stick to the game plan and do the right thing for the full four quarters."

After a strong start by Glencoe, Stark looked to rally his troops.

He said the message was simple - stick to the process.

"Some people expected the game to be done and dusted by half time but we were not expecting that at all," Stark said.

"We just wanted to stick to our processes and our game plan.

First game for Roosters

By Trevor Jackson

Tantanoola v Robe

Tantanoola faces somewhat of an unknown quantity when the Tigers host Robe in Round 2 of Mid South East football.

It will be Robe's first game of the 2022 season, after a bye in the opening round last week.

Tantanoola comes off a hard-fought victory over Nangwarry, with the game in the balance right to the final siren.

The Tigers certainly had to work hard for the victory, with the Saints kicking 16 major scores in a losing effort.

Six of those goals came from Tantanoola coach Jak Ryan, with several other Tigers kicking multiple majors.

That provides the Tigers with clear options up forward, with the mid-field under pressure to deliver with accuracy.

However, with Robe coming off a solid, somewhat extended pre-season, it is anyone's guess which way the final result will go.

The Roosters bowed out of last year's post season in the first semi-final, by just six points to a tough Hatherleigh outfit.

If they bring the same intensity this season, it could be a tough ask for the Tigers to claim the points.

Robe should claim the points, despite having to travel to Tantanoola.

Glencoe v Mount Burr

Over at Glencoe, the Murphies host Mount Burr, with both sides keen to open their accounts for the 2022 season.

Both sides suffered big losses last round, with Glencoe up against a tough Kalangadoo outfit keen to atone for its 2021 grand final loss to Port MacDonnell.

The Mozzies suffered a similar fate against Hatherleigh, another side keen to push deeper into the post season this year.

Glencoe will look for a better performance in the attacking 50, after Henry Smith was the only Murphy to kick multiple goals last week, with two to his name.

Mount Burr enjoyed a couple of multiple goal kickers against Hatherleigh, with Hamish Smith bagging three and Nathan Muhovics with two.

Again it is a tough call to pick a winner but on their home turf, Glencoe should claim the points in a tight contest.

Hatherleigh v Nangwarry

Last week Nangwarry almost pulled off a drought-breaking win but did not quite get across the line against a determined Tantanoola.

Hatherleigh made short work of Mount



Hatherleigh starts as hot favourite when they host Nangwarry in Round 2 of Mid South East football on Saturday.

Burr on a short road trip and this week enjoy the confines of its home ground.

It would be nice to see the Saints claim that breakthrough victory but it will not come against the Eagles.

Last season Hatherleigh fell short of a grand final berth and would be keen to remain at the pointy end of the ladder throughout 2022.

Coach Jake Dowdy led by example, with six goals to his name, while the remaining major scores were shared around, with Jack Skeer bagging four and Jordan Galpin three.

Add to that a couple from Joe Rayson and the Eagles certainly have plenty of firepower.

Nangwarry has a strong spearhead forward in Andrew Hyland, who kicked eight of the Saints goals last week.

With 16 goals in total, it left other Saints to stand tall and they certainly did that.

Trent Badman banged on three, while Jake McKeon contributed two.

Hyland is sure to be a focus for the Eagles this week and if they can limit his damage, Hatherleigh should claim a comfortable victory at home.

Kongorong v Kalangadoo

Kalangadoo appears to have returned to its 2021 form, albeit after just one round of football.

The Magpies travel to face Kongorong, a side that pushed the reigning premiers last week, again on their home deck.

To be at home for a second week will be a bonus for the Hawks but it will take more than

that to roll last year's bridesmaids.

The Magpies certainly hit the ground running, with 14 individual goal kickers to account for their 23 majors.

Ben Gregory and James Pratt topped the list with three each and it continued from there.

That will provide a tough challenge for any side, with Kongorong the face the task this weekend.

In contrast, the Hawks had seven major contributors in their loss but with just 11 goals scored, it was still a good spread.

Quite simply it is hard to see Kongorong having the firepower to be any threat to the Magpies, who could well complete another minor season undefeated.

Tigers host match of the round to take on the Roosters

Tantanoola v Robe

Round 2 of Mid South East netball marks Robe's first game for the 2022 season, in what has shaped up as the match of the round.

The young Roosters will hope to come out on top of the Tigers, who had a significant win over Nangwarry last week.

Tantanoola's Kate Bromley and Tayla Rowe will apply pressure to Robe's goalies and possibly create a few turnovers for their team.

The return of Annie Hunter to Robe will add confidence and help to steady the ball down the court, feeding with accuracy into Sarah Laurie and Tori Gluyas.

After a tough fight Robe may prove to be too much for Tantanoola and should come away with the points.

Hatherleigh v Nangwarry

Hatherleigh comes off a good win last week against Mount Burr and will be full of confidence, despite missing playing coach Tegan Merrett.

The Nangwarry defence of Shandeen Balshaw and Shannon Higgins will put the pressure on any goalies Hatherleigh utilises, after a big workload last week against Tantanoola.

However, the Eagles strength through the mid-court will allow them to pick off any loose balls and convert centre passes to add



Nangwarry will face a tough task in Round 2 of Mid South East netball, up against a tough Hatherleigh roster.

to their score.

Hatherleigh's defensive combination of Lara MacGregor and Sarah Broadhead will create pressure for the Saint's shooters, limiting their scoring opportunities.

The Eagles should finish the day with another win.

Glencoe v Mount Burr

After a close game against Hatherleigh in Round 1, Mount Burr will look to get their

first points on the board against Glencoe this week.

Maddi Haggett and Olivia Dean's pressure in the goal circle will make it tough for Glencoe's Jenna Paproth and Malinda Markiewicz.

Ebony Clark will combine well with Zoe Brown and shoot accurately for the Burr.

However, any misses will be rebounded with strength by Glencoe's Sarah Edwards and Chantelle Cocks and should help the Murphies claim another.

Kongorong v Kalangadoo

Kalangadoo suffered a loss last week to a tough Glencoe outfit and will look to atone for that result.

Unfortunately Kongorong will be in the firing line and will face a tough challenge.

Magpies Estelle Serle and Kori Collins will combine well in the goal circle and fight hard against the Kongorong defenders for any loose balls.

However, Tilah Buckingham's accuracy in the goal circle will make it hard for the Kalangadoo defenders to rebound any missed shots.

Lauren Kain should return to the Kalangadoo line up this week to add strength at the defensive end.

On the rebound, Kalangadoo should combine well and come away with the points.

Strong start to season

Millicent faced a depleted South Gambier outfit in Round 1 of Western Border netball on Saturday as the home team claimed a solid 52-goal win to start its season.

The Demons entered the clash missing two key tallers and having to utilise a raft of players backing up for their second game of the day as they became the first club to have significant numbers across all senior and junior grades unavailable due to Covid.

In contrast to South's unsettled line-up, the Saints looked as well drilled as ever, with six 2021 grand final players on court and newcomer Georgia Clarke slotting in nicely on the defensive wing.

The shooting combination of Tabatha Sanderson and Demi Verbena was on fire from the first whistle, netting 25 from 28 as the slick ball movement of mid-courtiers Paige Nitschke and Lisa Duldig fed them well.

South defenders Mykaela Thiele and Ruby Richter - who celebrated her 150th appear-



Millicent goal shooter Tabitha Sanderson was accurate under the net on Saturday as the Saints marched to a 52-goal win over South Gambier. Picture: JAMES MURPHY

ance for the club - had little chance to deny the Millicent shooters plenty of scoring opportunities.

The deficit was 17 at the first break and it

blew out to 26 by the half as both teams made changes.

Charlene Riley made her A Grade debut for the Demons as she backed up from A Reserve

and took on the daunting task of denying Sanderson the ball, while Richter moved into the centre and Thiele ventured out to goal defence.

For the Saints, Daisy Tunkin took the centre bib, bringing fresh legs to the role as the Saints continued to score at will, putting another 24 goals on the board for the quarter.

Sanderson shot with her usual accuracy but Verbena was on another level and shot eight from eight in the first, second and last quarters, missing only one attempt for the game when she netted seven from eight in the third.

At the other end of the court Millicent defenders made life tough for the South attack which was well led by Alyssa Duncan, whose combination with Lara Munro showed promise against the tight checking of Portia McRae and Hannah Nitschke.

However, in the end the weight of supply and the clinical ball movement of the Saints was overwhelming and they powered to a 52-goal victory.

Saints drop the ball in grand final rematch for season

From page 32

"As disappointing as it was to lose, there was definitely some stuff we got out of it and will take away from the game," he said.

"We didn't execute going forward as much as we'd like, so we just have to work on that midfield to forward connection.

"Our skills let us down a little bit too, which is something we really pride ourselves on.

"They are a couple of areas that we have talked about and will work on in the weeks to come."

The feedback was not all negative and there were some good signs to come from the match.

The inclusion of Thomas Hutchesson added some spark to Millicent's game whenever he popped up around the ground.

He found plenty of the ball as he settled back into playing football and managed to score three goals in a positive performance.

On the day Jacob Carger was named the Saints' best player, as he led the side well both by example and with his voice, while also finding the big sticks on three occasions.

"He works hard and gets to some good spots, he is just a natural leader both on the field and with his voice and instruction to the group," Gallio said.

"Especially in that third quarter he had heaps of the footy and gave it his all to try and move us forward and score."

Dylan Tincknell and the returning Dylan Bromley were solid in defence against South's unrelenting attack and both earned themselves a place among the best players.

However, South was still able to find its opportunities at goal, with playing coach Brayden Kain again a focal point in the forward 50.

He led well and took some big marks, which translated onto the scoreboard with four goals to his name.

Youngster Mitchell Sims was also impressive with three majors, while Liam Delaney shined brightly in his A Grade debut, earning himself a place in the Demons' best with two goals to show for his efforts.

Taylor Saffin was a thorn in the Saints' side off half-back and his rebounding ability earned him the best-on-ground honours for the victors.

Millicent will travel to Casterton to face the Cats this week, who come off a drought-breaking win against West on Saturday.



Millicent's Kade Varcoe finds himself under pressure during the Saints' round one clash against South Gambier. Picture: JAMES MURPHY

The South Eastern Times

ESTABLISHED 1891

Website:

www.setimes.com.au

CLASSIFIEDS

Phone: 1300 666 808

Email: sales@networkclassifieds.com.au

ADVERTISING

Phone: 08 8741 8170

Email: advertising@tbwtoday.com.au

EDITORIAL

Phone: 08 8741 8170

Email: editorial@tbwtoday.com.au

DEADLINES

Advertising Bookings Thursday 4pm
(week prior)

Classified Bookings Tuesday 3.30pm

Managing Editor, Peter Gandolfi.

Level 1, 1 Commercial St East, Mount Gambier SA, 5290.

Published by TBW Today Pty Ltd.

ACN 644 311 937.

All material is copyright to TBW Today Pty Ltd.

All significant errors will be corrected as soon as possible.

Distribution numbers, areas and coverage are estimates

only. For our terms and conditions, please visit

borderwatch.com.au/terms-and-conditions.



Proudly a South Australian company.
Printed in South Australia.

Back to the drawing board

By James Murphy

It was far from the ideal finish to Millicent's Limestone Coast Women's Football season on Sunday.

The Saints found themselves up against North Gambier in the B Division elimination final, but suffered a 100-0 point loss which knocked them out of the consolation finals after the first week.

Unfortunately that was the theme of the team's season, with just the one win against wooden-spooner Kalangadoo and some convincing losses throughout the competition.

On Sunday it was a similar scenario as the Tigers set up a 15-point lead by quarter time, before they doubled their efforts in the second term to hold a 34-point advantage at the main break.

The Saints' scoreboard remained untouched in the second half, while North finished strongly with another three majors in the third, before a dominant fourth quarter yielded seven goals and an eventual 100-point win.

Amellia Gronn stood tall in Millicent's defeat and earned herself recognition as the Saints' best on ground.

Lauren Potter played her usual hard-working game, while Alannah Pratt, Bailey Ivison, Kali Brown and Lilly Hateley were also mentioned for their efforts.

For the victors it was Dianne Wilson who was the standout, while Chloe Perryman and Dana Jones also excelled.

Wilson's boot was dialled in well and she banged through seven goals for the match.

Perryman managed three majors, while Yenna Joyce - also among the Tigers' best - and Jasmyn Plew-Jones scored two each.

Reflecting on the 2022 season, Millicent showed steady growth as a team and held its head high despite its losing margins.

Its results were not ideal, but players will



Millicent's Lauren Potter put in another hard-working performance for her team on Sunday, as the Saints bowed out of the women's football finals with a 100-point loss to North Gambier.

take this year's competition as a learning curve and carry its lessons into next season.

The Saints will now head into the off-sea-

son with plenty to think about and will be sure to focus on the development of skills looking prior to the 2023 competition.

Saints cross the border

By James Murphy

A roadtrip to Island Park looms for Millicent footballers this weekend, as the Saints travel to play Casterton Sandford in Round 2 of Western Border football.

The Saints started their premierships defence with a loss to South Gambier last week, but will have their sight set on an improved result on Saturday.

However, unlike last season the Cats appear to pose a greater threat after a drought-breaking win over West Gambier in Round 1.

The cross-border club has recruited well over the summer and looks to have a good pre-season under its belt.

As such Millicent will do well to not underestimate its host this week and will address a few issues from round one on the training track this week.

Jacob Carger found plenty of the football last week and led well with his voice around the ground.

His never-say-die efforts and three goals helped the Saints greatly against the Demons and he will look to back up his best-on-ground performance again this Saturday.

Dylan Bromley slotted into the Saints' roster seamlessly and was solid down back, as was Dylan Tincknell, while Hatherleigh recruit Sam Waring showed plenty of promise in the ruck.

Waring will match up against Hamish McCrae this week, who put in a best-on-ground performance for the Cats as he valiantly contested against West's Daron McElroy in Round 1.

New recruit Ed Pritchard was another standout for the Cats last week, while Dylan Ayton and Billy Galpin will also be ones to watch out for.

Kicking accuracy let the Saints down on the weekend and they will be eager to convert more shots on goal against the Cats.

The Cats did well to find tracks through the midfield into goal last round and off the back of their 29-point win, Millicent playing coach Clint Gallio expects them to be full of confidence on Saturday.

"Without winning a game last year and then coming in and winning round one they will be full of confidence," he said.



Millicent's Thomas Hutchesson slotted back into his home team well in round one and will be out for another good outing against Casterton Sandford on Saturday.

Picture: JAMES MURPHY

"I think it is going to be a pretty close competition this year, which is good."

However, Millicent's focus this week has

been on the things it can control, as the Saints look to address a few skill errors which let them down against South.

"We will just concentrate on what we can control and hopefully get our game going again," Gallio said.

Another win looks likely for Saints clash with the Vic's

Millicent A Grade netballers should have another percentage-boosting win on their hands when they travel to Island Park to play Casterton Sandford in Round 2 of Western Border netball.

The Saints looked slick in their comprehensive win over South Gambier in the opening round with their trademark ball movement and relentless defence on show.

Portia McRae and Hannah Nitschke continue to be a strong defensive combination and new face Georgia Clarke applied typical Millicent pressure on the defensive wing.

At the other end of the court Tabatha Sanderson and Demi Verbena pose a daunting threat in goals and with the likes of Lisa Duldig, Daisy Tunkin and Paige Nitschke delivering the ball, it will be a tough day out for Cats' defenders.

The biggest challenge for the Cats early in 2022 is player unavailability and as they continue to build a new-look A Grade line-up, it is going to take time.

Scarlett Jarrad is the lynchpin of the team in centre and Charlotte Rice looms as a great target for Casterton Sandford's offensive line with her well-timed moves and strength on the hold.

At the other end, new recruit Tessa Marra will quickly find her feet in the Western Border competition and along with the likes of hard-working junior Ebany Jarrad, will have their work cut out as they take on Sanderson and Verbena.

However, it shapes up to be another convincing win for Millicent.



New recruit Georgia Clarke has settled in nicely at Millicent and will look for another solid game in the Saints' round-two clash against Casterton Sandford.

Picture: JAMES MURPHY



Tigers put to the test
PAGE 28



Saints fall short at home

By James Murphy

Millicent A Grade footballers missed out on the fairytale start to their premiership defence on Saturday when the Saints hosted South Gambier at McLaughlin Park for Round 1 of the Western Border season.

The home team fell to the Demons by 25 points at the final siren, which left the Saints with some work to do heading into this weekend.

Coach Clint Gallio said while there were some good patches from his team, the grand final rematch revealed some areas to work on moving forward.

South held the wind advantage in the opening term and used it effectively to pile on five goals to Millicent's one and establish a 26-point margin at the first change.

That left South with a handy buffer and with three goals each in the second quarter the margin remained relatively unchanged at half time.

The difference stretched out slightly to 29 in the third, before Millicent reeled it in somewhat in the final term.

The Saints' kicking percentage hurt them in the end and they only converted 50pc of shots on goal.

That is one area Gallio hopes to improve on moving forward.



Jacob Carger put in a solid performance for Millicent on Saturday and earned himself the best-on-ground honours in the Saints' loss to South.

Picture: JAMES MURPHY

Continued page 30

WIN UP TO \$500 IN FLIGHT CENTRE GIFT CARDS EVERY MINUTE

EXCLUSIVE TO **SipnSave**

<p>24 PACK \$47.99 EACH</p> <p>HAHN SUPER DRY 24 X 330ML BOTTLES</p>	<p>HOT PRICE \$49.99 EACH</p> <p>COOPERS PALE ALE 24 X 375ML BOTTLES OR CANS</p>	<p>HOT PRICE \$45.99 EACH</p> <p>JACK DANIEL'S & COLA 4.8% 10 X 375ML CANS</p>	<p>HOT PRICE \$55.99 EACH</p> <p>JACK DANIEL'S DOUBLE JACK & COLA 6.9% 10 X 375ML CANS</p>
<p>30 PACK \$49.99 EACH</p> <p>HAHN SUPER DRY 3.5 30 X 375ML CANS</p>	<p>\$52.99 EACH</p> <p>CARLTON DRAUGHT 24 X 375ML BOTTLES</p>	<p>30 PACK \$53.99 EACH</p> <p>WEST END DRAUGHT 30 X 375ML CANS</p>	<p>10 PACK \$37.99 EACH</p> <p>CANADIAN CLUB PREMIX 4.8% VARIETIES 10 X 375ML CANS</p>
<p>24 PACK \$75.99 EACH</p> <p>VODKA CRUISER 4.6% VARIETIES 24 X 275ML BOTTLES</p>		<p>10 PACK \$39.99 EACH</p> <p>JOHNNIE WALKER RED & COLA OR BUNDABERG UP RUM & COLA 4.6% VARIETIES 10 X 375ML CANS</p>	<p>24 PACK \$82.99 EACH</p> <p>JIM BEAM WHITE & COLA 4.8% CUBE VARIETIES 24 X 375ML CANS</p>

START AT SipnSave

SIPNSAVE.COM.AU

SOMERSET HOTEL MILLICENT 8733 2888

SipnSave supports the responsible service of alcohol. Specials apply 06/04/22 to 12/04/22 or while stocks last. Price may vary in country areas due to freight. Price includes GST. www.sipnsave.com.au

2022 DiGiorgio Family Wines PENOLA CUP

Sunday 17TH April



General Admission Concession

\$20 **\$10**

+

Dining Room Packages Available

BOOK NOW

countryracingsa.com.au

